

## HAVCR1 Polyclonal Antibody

**Catalog No.** E-AB-15501

*Note:* Centrifuge before opening to ensure complete recovery of vial contents.

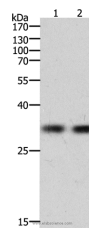
### Description

<b>Reactivity</b>	Human
<b>Immunogen</b>	Synthetic peptide of human HAVCR1
<b>Host</b>	Rabbit
<b>Isotype</b>	IgG
<b>Purification</b>	Affinity purification
<b>Conjugation</b>	Unconjugated
<b>Buffer</b>	PBS with 0.05% sodium azide and 50% glycerol, PH7.4

### Applications Recommended Dilution

**WB** 1:500-1:2000

### Data



Western Blot analysis of k562 cell and Hela cell using  
HAVCR1 Polyclonal Antibody at dilution of 1:700  
**Calculated Mw:39kDa**

### Preparation & Storage

**Storage** Store at -20°C. Avoid freeze / thaw cycles.

### Background

The protein encoded by this gene is a membrane receptor for both human hepatitis A virus (HHAV) and TIMD4. The encoded protein may be involved in the moderation of asthma and allergic diseases. The reference genome represents an allele that retains a MTTVP amino acid segment that confers protection against atopy in HHAV seropositive individuals. Three transcript variants encoding the same protein have been found for this gene.

### For Research Use Only