

FOSL1 Polyclonal Antibody

Catalog No. E-AB-15637

Note: Centrifuge before opening to ensure complete recovery of vial contents.

Description

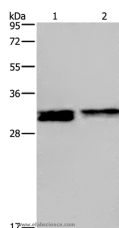
Reactivity	Human,Rat
Immunogen	Synthetic peptide of human FOSL1
Host	Rabbit
Isotype	IgG
Purification	Affinity purification
Conjugation	Unconjugated
Buffer	PBS with 0.05% sodium azide and 50% glycerol, PH7.4

Applications

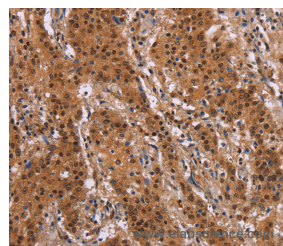
Recommended Dilution

WB	1:500-1:2000
IHC	1:50-1:200

Data



Western Blot analysis of HeLa and Jurkat cell using FOSL1 Polyclonal Antibody at dilution of 1:615
Calculated Mw:29kDa



Immunohistochemistry of paraffin-embedded Human gastric cancer using FOSL1 Polyclonal Antibody at dilution of 1:30

Preparation & Storage

Storage Store at -20°C. Avoid freeze / thaw cycles.

Background

The Fos gene family consists of 4 members: FOS, FOSB, FOSL1, and FOSL2. These genes encode leucine zipper proteins that can dimerize with proteins of the JUN family, thereby forming the transcription factor complex AP-1. As such, the FOS proteins have been implicated as regulators of cell proliferation, differentiation, and transformation.

For Research Use Only