

ARPC2 Polyclonal Antibody

Catalog No. E-AB-15929

Note: Centrifuge before opening to ensure complete recovery of vial contents.

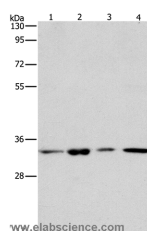
Description

Reactivity	Human, Mouse, Rat
Immunogen	Synthetic peptide of human ARPC2
Host	Rabbit
Isotype	IgG
Purification	Affinity purification
Conjugation	Unconjugated
Buffer	PBS with 0.05% sodium azide and 50% glycerol, PH7.4

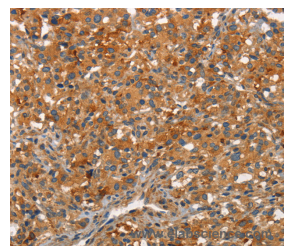
Applications Recommended Dilution

WB	1:200-1:1000
IHC	1:25-1:100

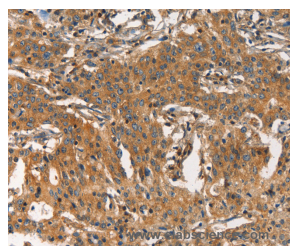
Data



Western Blot analysis of 231 cell and Human fetal brain tissue, NIH/3T3 and PC3 cell using ARPC2 Polyclonal Antibody at dilution of 1:350
Calculated Mw:34kDa



Immunohistochemistry of paraffin-embedded Human thyroid cancer using ARPC2 Polyclonal Antibody at dilution of 1:30



Immunohistochemistry of paraffin-embedded Human gastric cancer using ARPC2 Polyclonal Antibody at dilution of 1:30

Preparation & Storage

Storage Store at -20°C. Avoid freeze / thaw cycles.

For Research Use Only

Background

This gene encodes one of seven subunits of the human Arp2/3 protein complex. The Arp2/3 protein complex has been implicated in the control of actin polymerization in cells and has been conserved through evolution. The exact role of the protein encoded by this gene, the p34 subunit, has yet to be determined. Two alternatively spliced variants have been characterized to date. Additional alternatively spliced variants have been described but their full length nature has not been determined.