

ALG11 Polyclonal Antibody

Catalog No. E-AB-16151

Note: Centrifuge before opening to ensure complete recovery of vial contents.

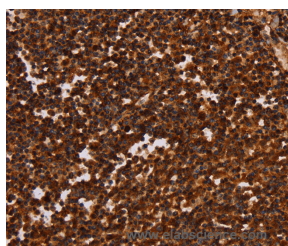
Description

Reactivity	Human, Mouse
Immunogen	Synthetic peptide of human ALG11
Host	Rabbit
Isotype	IgG
Purification	Affinity purification
Conjugation	Unconjugated
Buffer	PBS with 0.05% sodium azide and 50% glycerol, PH7.4

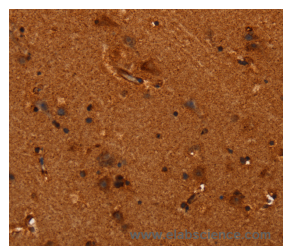
Applications Recommended Dilution

IHC 1:100-1:300

Data



Immunohistochemistry of paraffin-embedded Human tonsil tissue using ALG11 Polyclonal Antibody at dilution 1:40



Immunohistochemistry of paraffin-embedded Human brain tissue using ALG11 Polyclonal Antibody at dilution 1:40

Preparation & Storage

Storage Store at -20°C. Avoid freeze / thaw cycles.

Background

This gene encodes a GDP-Man:Man3GlcNAc2-PP-dolichol-alpha1,2-mannosyltransferase which is localized to the cytosolic side of the endoplasmic reticulum (ER) and catalyzes the transfer of the fourth and fifth mannose residue from GDP-mannose (GDP-Man) to Man3GlcNAc2-PP-dolichol and Man4GlcNAc2-PP-dolichol resulting in the production of Man5GlcNAc2-PP-dolichol. Mutations in this gene are associated with congenital disorder of glycosylation type I_p (CDGIP).

For Research Use Only