

APC Anti-Mouse CD105 Antibody[MJ7/18]

Catalog No.	E-AB-F1233E	Reactivity	Mouse
Storage	Store at 2~8°C, Avoid freeze / thaw cycles	Applications	FCM

Important Note: Centrifuge before opening to ensure complete recovery of vial contents.

Antigen Information

Alternate Names	Endoglin,END,Eng
Uniprot ID	Q63961
Background	CD105 is a 90 kD homodimeric type I integral membrane glycoprotein, also known as endoglin. It is expressed on endothelial cells (especially on angiogenic endothelial cells) and upregulated by hypoxia, activated monocytes, macrophages, bone marrow stromal cells, and some cytotrophoblasts. CD105 is a receptor for TGF-β1, TGF-β3 and modulates TGF-β signaling by interacting with TGF-β receptors I and/or II. CD105 also binds other growth factors such as actin A, BMP-2, and BMP-7. CD105 has been show to be a useful marker for identifying proliferating endothelium involved in tumor angiogenesis and can be used for tumor imaging and prognosis, and has therapeutic potential for some solid tumors and other angiogenic diseases.

Product Details

Form	Liquid
Size	50Tests/100Tests/100Tests×2
Clone No.	MJ7/18
Host	Rat
Isotype	Rat IgG2a, κ
Reactivity	Mouse
Application	FCM
Isotype Control	APC Rat IgG2a, κ Isotype Control[2A3] [Product E-AB-F09832E]
Storage Buffer	Phosphate buffered solution, pH 7.2, containing 0.09% stabilizer and 1% protein protectant.
Shipping	Biological ice pack at 4 °C
Stability & Storage	Keep as concentrated solution. Store at 2~8°C and protected from prolonged exposure to light.Do not freeze. This product is guaranteed up to one year from purchase.

For Research Use Only

Fluorophore

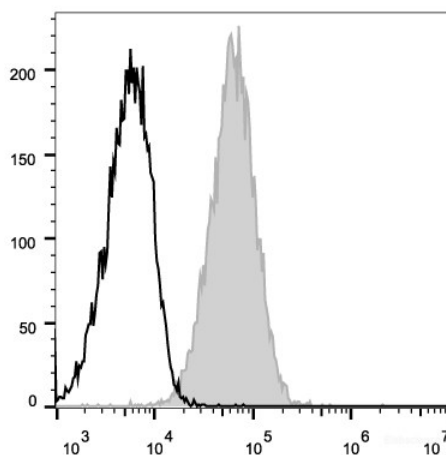
Conjugation: APC

APC is designed to be excited by the Red (627-640 nm) laser and detected using an optical filter centered near 660 nm (e.g., a 660/20 nm bandpass filter).

Recommended usage

Each lot of this antibody is quality control tested by flow cytometric analysis. **The amount of the reagent is suggested to be used 5 μ L of antibody per test (million cells in 100 μ L staining volume or per 100 μ L of whole blood).** Please check your vial before the experiment. Since applications vary, the appropriate dilutions must be determined for individual use.

Product data



Mouse endothelial cells (bEnd.3) are stained with APC Anti-Mouse CD105 Antibody (filled gray histogram). APC Mouse IgG2a, κ Isotype Control stained cells are used as control.

Related Information

1. Sample Preparation for Flow Cytometry <https://www.elabscience.com/List-detail-5594.html>
2. Staining Cell Surface Targets for Flow Cytometry <https://www.elabscience.com/List-detail-5568.html>
3. Flow Cytometry Troubleshooting Tips <https://www.elabscience.com/List-detail-5593.html>
4. How to select the appropriate detection channel through the spectrogram? <https://www.elabscience.com/List-detail-459742.html>