

K1KB3 Polyclonal Antibody

Catalog Number:E-AB-40368

Note: Centrifuge before opening to ensure complete recovery of vial contents.

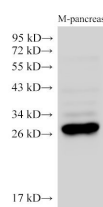
Description

Reactivity	Human,Mouse
Immunogen	Recombinant Mouse Kallikrein 1-related peptidase b3 protein
Host	Rabbit
Isotype	IgG
Purification	Antigen Affinity Purification
Conjugation	Unconjugated
Formulation	PBS with 0.05% Proclin300, 50% glycerol, pH7.3.

Applications Recommended Dilution

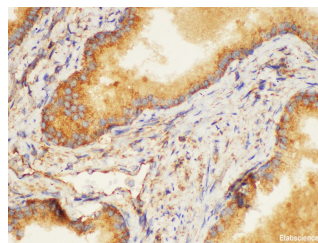
WB	1:2500-1:4000
IHC	1:100-1:300

Data

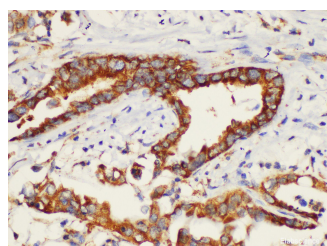


Western Blot analysis of Mouse pancreas using K1KB3 Polyclonal Antibody at dilution of 1:2500.

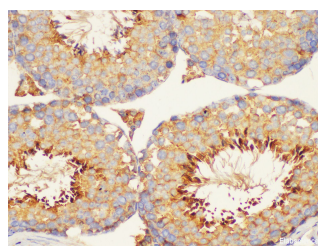
Observed Mw:28 kDa
Calculated Mw:28 kDa



Immunohistochemistry of paraffin-embedded Human prostate using K1KB3 Polyclonal Antibody at dilution of 1:200.



Immunohistochemistry of paraffin-embedded Human pancreatic cancer using K1KB3 Polyclonal Antibody at dilution of 1:200.



Immunohistochemistry of paraffin-embedded Mouse testis using K1KB3 Polyclonal Antibody at dilution of 1:200.

Preparation & Storage

Storage Store at -20°C. Avoid freeze / thaw cycles.

Background

KLK1B3, also known as 7S nerve growth factor gamma chain. 7S nerve growth factor is composed of two alpha chains, a beta dimer composed of identical chains, and two gamma chains. The gamma chain is an arginine-specific protease; it may also have plasminogen activator activity, as well as mitogenic activity for chick embryo fibroblasts.

For Research Use Only

A Reliable Research Partner in Life Science and Medicine

Toll-free: 1-888-852-8623

Web: www.elabscience.com

Tel: 1-832-243-6086

Email: techsupport@elabscience.com

Fax: 1-832-243-6017