

## KLK6 Polyclonal Antibody

**Catalog No.** E-AB-40369

*Note:* Centrifuge before opening to ensure complete recovery of vial contents.

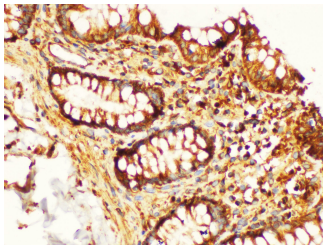
### Description

<b>Reactivity</b>	Human
<b>Immunogen</b>	Recombinant Human Kallikrein-6 protein
<b>Host</b>	Rabbit
<b>Isotype</b>	IgG
<b>Purification</b>	Antigen Affinity Purification
<b>Conjugation</b>	Unconjugated
<b>Buffer</b>	PBS with 0.02% sodium azide, 1% protective protein and 50% glycerol, pH7.4

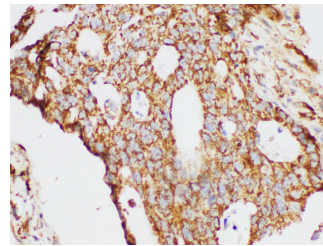
### Applications Recommended Dilution

**IHC** 1:100-1:300

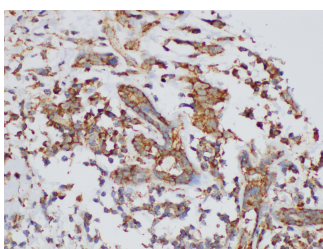
### Data



Immunohistochemistry of paraffin-embedded Human colon using KLK6 Polyclonal Antibody at dilution of 1:200.



Immunohistochemistry of paraffin-embedded Human colon cancer using KLK6 Polyclonal Antibody at dilution of 1:200.



Immunohistochemistry of paraffin-embedded Human breast cancer using KLK6 Polyclonal Antibody at dilution of 1:200.

### Preparation & Storage

**Storage** Store at -20°C. Avoid freeze / thaw cycles.

### Background

Kallikreins are a subgroup of serine proteases having diverse physiological functions. Growing evidence suggests that

### For Research Use Only

many kallikreins are implicated in carcinogenesis and some have potential as novel cancer and other disease biomarkers. This gene is one of the fifteen kallikrein subfamily members located in a cluster on chromosome 19. The encoded enzyme is regulated by steroid hormones. In tissue culture, the enzyme has been found to generate amyloidogenic fragments from the amyloid precursor protein, suggesting a potential for involvement in Alzheimer's disease. Multiple alternatively spliced transcript variants that encode different isoforms have been identified for this gene.