

## CD109 Polyclonal Antibody

**Catalog No.** E-AB-40372

**Note:** Centrifuge before opening to ensure complete recovery of vial contents.

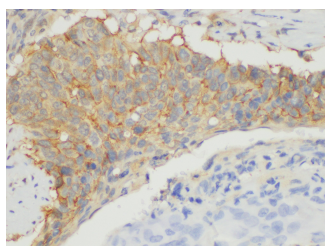
### Description

<b>Reactivity</b>	Human,Rat
<b>Immunogen</b>	Recombinant Human CD109 antigen protein
<b>Host</b>	Rabbit
<b>Isotype</b>	IgG
<b>Purification</b>	Antigen Affinity Purification
<b>Conjugation</b>	Unconjugated
<b>Buffer</b>	PBS with 0.05% Proclin300, 50% glycerol, pH7.3.

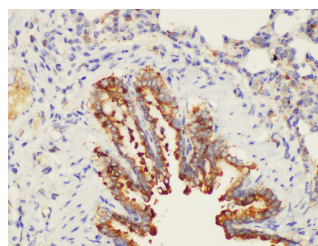
### Applications Recommended Dilution

**IHC 1:100-1:300**

### Data



Immunohistochemistry of paraffin-embedded Human lung cancer using CD109 Polyclonal Antibody at dilution of 1:100.



Immunohistochemistry of paraffin-embedded Rat lung using CD109 Polyclonal Antibody at dilution of 1:200.

### Preparation & Storage

**Storage** Store at -20°C. Avoid freeze / thaw cycles.

### Background

CD109, also named as CPAMD7, is a member of the alpha2-macroglobulin/complement superfamily. It is a glycosylphosphatidylinositol (GPI)-linked cell surface glycoprotein of approximately 170kd which is found on the cell surface of platelets, activated T-cells, and endothelial cells. CD109 binds to and negatively regulates signaling of transforming growth factor beta (TGF-beta). CD109 has been identified as part of the TGF-beta receptor system in human keratinocytes. Up regulation of CD109 expression has been observed in several different types of tumor. Multiple transcript variants encoding different isoforms have been found for CD109. The antibody can recognize all these 4 isoforms.

### For Research Use Only