

CD146 Polyclonal Antibody

Catalog No. E-AB-40373

Note: Centrifuge before opening to ensure complete recovery of vial contents.

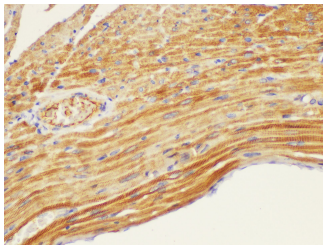
Description

Reactivity	Mouse,Rat
Immunogen	Recombinant Rat Cell surface glycoprotein MUC18 protein
Host	Rabbit
Isotype	IgG
Purification	Antigen Affinity Purification
Conjugation	Unconjugated
Buffer	PBS with 0.05% Proclin300, 50% glycerol, pH7.3.

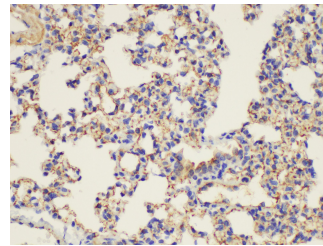
Applications Recommended Dilution

IHC 1:100-1:300

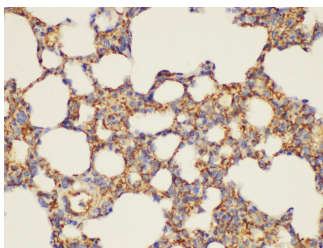
Data



Immunohistochemistry of paraffin-embedded Mouse heart using CD146 Polyclonal Antibody at dilution of 1:200.



Immunohistochemistry of paraffin-embedded Mouse lung using CD146 Polyclonal Antibody at dilution of 1:200.



Immunohistochemistry of paraffin-embedded Rat lung using CD146 Polyclonal Antibody at dilution of 1:200.

Preparation & Storage

Storage Store at -20°C. Avoid freeze / thaw cycles.

Background

CD146, also known as melanoma cell adhesion molecule (MCAM) or MUC18, originally identified as a biomarker of

For Research Use Only

melanoma progression, is a transmembrane glycoprotein belonging to the immunoglobulin (Ig) superfamily. Structurally, it consists of five Ig domains, a transmembrane domain, and a cytoplasmic region. In normal adult tissue, CD146 is primarily expressed by vascular endothelium and smooth muscle. CD146 is a key cell adhesion protein in vascular endothelial cell activity and angiogenesis, and has been used as a marker of circulating endothelial cells (CECs).