

ENG Polyclonal Antibody

Catalog No. E-AB-40375

Note: Centrifuge before opening to ensure complete recovery of vial contents.

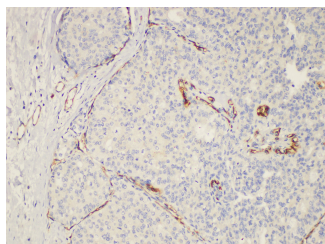
Description

Reactivity	Human
Immunogen	Recombinant Human Endoglin protein
Host	Rabbit
Isotype	IgG
Purification	Antigen Affinity Purification
Conjugation	Unconjugated
Buffer	PBS with 0.05% Proclin300, 50% glycerol, pH7.3.

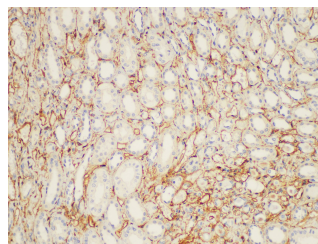
Applications Recommended Dilution

IHC 1:100-1:300

Data



Immunohistochemistry of paraffin-embedded Human breast cancer using ENG Polyclonal Antibody at dilution of 1:200.



Immunohistochemistry of paraffin-embedded Human kidney using ENG Polyclonal Antibody at dilution of 1:200.

Preparation & Storage

Storage Store at -20°C. Avoid freeze / thaw cycles.

Background

ENG (Endoglin) is a Protein Coding gene. Diseases associated with ENG include Telangiectasia, Hereditary Hemorrhagic, Type 1 and Hereditary Hemorrhagic Telangiectasia. Among its related pathways are Angiogenesis (CST) and HIF-1-alpha transcription factor network. GO annotations related to this gene include protein homodimerization activity and glycosaminoglycan binding. An important paralog of this gene is TGFBR3. This gene encodes a homodimeric transmembrane protein which is a major glycoprotein of the vascular endothelium. This protein is a component of the transforming growth factor beta receptor complex and it binds to the beta1 and beta3 peptides with high affinity. Mutations in this gene cause hereditary hemorrhagic telangiectasia, also known as Osler-Rendu-Weber syndrome 1, an autosomal dominant multisystemic vascular dysplasia. This gene may also be involved in preeclampsia and several types of cancer. Alternatively spliced transcript variants encoding different isoforms have been found for this gene.

For Research Use Only