

## ST14 Polyclonal Antibody

**Catalog No.** E-AB-40378

*Note:* Centrifuge before opening to ensure complete recovery of vial contents.

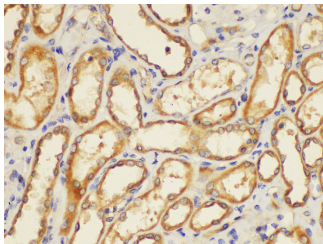
### Description

<b>Reactivity</b>	Human
<b>Immunogen</b>	Recombinant Human Suppressor of tumorigenicity 14 protein
<b>Host</b>	Rabbit
<b>Isotype</b>	IgG
<b>Purification</b>	Antigen Affinity Purification
<b>Conjugation</b>	Unconjugated
<b>Buffer</b>	PBS with 0.05% Proclin300, 50% glycerol, pH7.3.

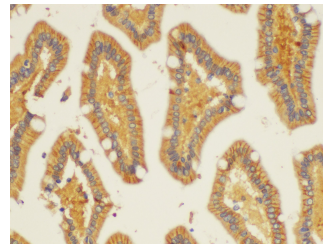
### Applications Recommended Dilution

**IHC** 1:100-1:200

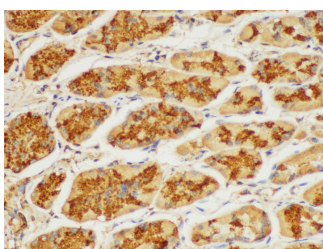
### Data



Immunohistochemistry of paraffin-embedded Human kidney using ST14 Polyclonal Antibody at dilution of 1:200.



Immunohistochemistry of paraffin-embedded Human duodenum using ST14 Polyclonal Antibody at dilution of 1:200.



Immunohistochemistry of paraffin-embedded Human stomach using ST14 Polyclonal Antibody at dilution of 1:100.

### Preparation & Storage

**Storage** Store at -20°C. Avoid freeze / thaw cycles.

### Background

The protein encoded by this gene is an epithelial-derived, integral membrane serine protease. This protease forms a

### For Research Use Only

complex with the Kunitz-type serine protease inhibitor, HAI-1, and is found to be activated by sphingosine 1-phosphate. This protease has been shown to cleave and activate hepatocyte growth factor/scattering factor, and urokinase plasminogen activator, which suggest the function of this protease as an epithelial membrane activator for other proteases and latent growth factors.