

# ST14 Polyclonal Antibody

Catalog Number:E-AB-40378

**Note:** Centrifuge before opening to ensure complete recovery of vial contents.

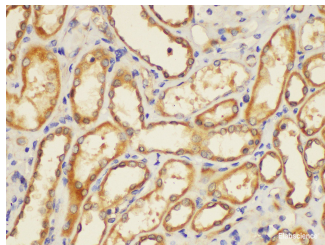
## Description

|                     |   |
|---------------------|---|
| <b>Reactivity</b>   | Human   |
| <b>Immunogen</b>    | Recombinant Human Suppressor of tumorigenicity 14 protein |
| <b>Host</b>         | Rabbit  |
| <b>Isotype</b>      | IgG   |
| <b>Purification</b> | Antigen Affinity Purification                             |
| <b>Conjugation</b>  | Unconjugated  |
| <b>Formulation</b>  | PBS with 0.05% Proclin300, 50% glycerol, pH7.3.           |

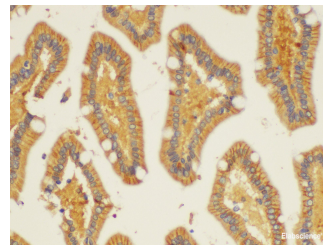
## Applications Recommended Dilution

|            |             |
|------------|-------------|
| <b>IHC</b> | 1:100-1:200 |
|------------|-------------|

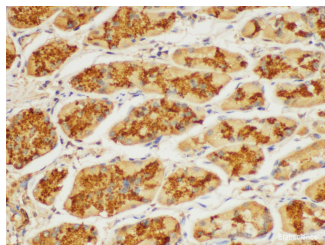
## Data



Immunohistochemistry of paraffin-embedded Human kidney using ST14 Polyclonal Antibody at dilution of 1:200.



Immunohistochemistry of paraffin-embedded Human duodenum using ST14 Polyclonal Antibody at dilution of 1:200.



Immunohistochemistry of paraffin-embedded Human stomach using ST14 Polyclonal Antibody at dilution of 1:100.

## Preparation & Storage

**Storage** Store at -20°C. Avoid freeze / thaw cycles.

## Background

The protein encoded by this gene is an epithelial-derived, integral membrane serine protease. This protease forms a complex with the Kunitz-type serine protease inhibitor, HAI-1, and is found to be activated by sphingosine 1-phosphate. This protease has been shown to cleave and activate hepatocyte growth factor/scattering factor, and urokinase plasminogen activator, which suggest the function of this protease as an epithelial membrane activator for other proteases and latent growth factors.

## For Research Use Only

A Reliable Research Partner in Life Science and Medicine

Toll-free: 1-888-852-8623

Web: [www.elabscience.com](http://www.elabscience.com)

Tel: 1-832-243-6086

Email: [techsupport@elabscience.com](mailto:techsupport@elabscience.com)

Fax: 1-832-243-6017