

ST14 Polyclonal Antibody

Catalog No. E-AB-40379

Note: Centrifuge before opening to ensure complete recovery of vial contents.

Description

Reactivity	Mouse,Rat
Immunogen	Recombinant Mouse Suppressor of tumorigenicity 14 protein homolog protein
Host	Rabbit
Isotype	IgG
Purification	Antigen Affinity Purification
Conjugation	Unconjugated
Buffer	PBS with 0.05% Proclin300, 50% glycerol, pH7.3.

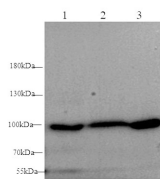
Applications

Recommended Dilution

WB:1:500-1000 IHC

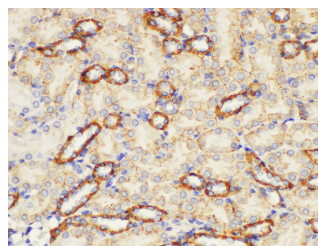
1:100-1:300

Data

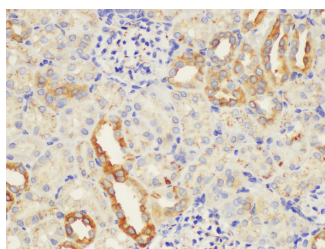


Western blot with ST14 Polyclonal antibody at dilution of 1:1000. lane 1: Mouse Kidney, lane 2: Mouse breast, lane 3: Rat Kidney

Observed Mw:80-95 kDa
Calculated Mw:95kDa



Immunohistochemistry of paraffin-embedded Mouse kidney using ST14 Polyclonal Antibody at dilution of 1:200.



Immunohistochemistry of paraffin-embedded Rat kidney using ST14 Polyclonal Antibody at dilution of 1:200.

Preparation & Storage

Storage Store at -20°C. Avoid freeze / thaw cycles.

For Research Use Only

Background

The protein encoded by this gene is an epithelial-derived, integral membrane serine protease. This protease forms a complex with the Kunitz-type serine protease inhibitor, HAI-1, and is found to be activated by sphingosine 1-phosphate. This protease has been shown to cleave and activate hepatocyte growth factor/scattering factor, and urokinase plasminogen activator, which suggest the function of this protease as an epithelial membrane activator for other proteases and latent growth factors.