

LDHB Polyclonal Antibody

Catalog No. E-AB-40383

Note: Centrifuge before opening to ensure complete recovery of vial contents.

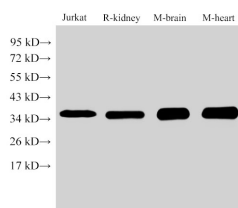
Description

Reactivity	Human,Mouse,Rat
Immunogen	Recombinant Human L-lactate dehydrogenase B chain protein
Host	Rabbit
Isotype	IgG
Purification	Antigen Affinity Purification
Conjugation	Unconjugated
Buffer	PBS with 0.02% sodium azide,1% protective protein and 50% glycerol,pH7.4

Applications Recommended Dilution

WB 1:500-1:2000

Data



Western Blot analysis of 1)Jurkat, 2)Rat kidney, 3)Mouse brain, 4)Mouse heart using LDHB Polyclonal Antibody at dilution of 1:1000.

Observed Mw:36 kDa
Calculated Mw:36 kDa

Preparation & Storage

Storage Store at -20°C. Avoid freeze / thaw cycles.

Background

LDHB,also named as LDH-H and NY-REN-46,belongs to the LDH/MDH superfamily. And LDH family. It is an enzyme which catalyzes the reversible conversion of lactate and pyruvate,and NAD and NADH,in the glycolytic pathway.It is glycolytic enzymes and it is positively regulated by mTOR.

For Research Use Only