

## CD146 Ployclonal Antibody

**Catalog No.** E-AB-40387

*Note:* Centrifuge before opening to ensure complete recovery of vial contents.

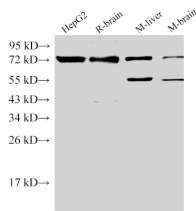
### Description

<b>Reactivity</b>	Human,Mouse,Rat
<b>Immunogen</b>	Recombinant Human Cell surface glycoprotein MUC18 protein
<b>Host</b>	Rabbit
<b>Isotype</b>	IgG
<b>Purification</b>	Antigen Affinity Purification
<b>Conjugation</b>	Unconjugated
<b>Buffer</b>	PBS with 0.05% Proclin300, 50% glycerol, pH7.3.

### Applications Recommended Dilution

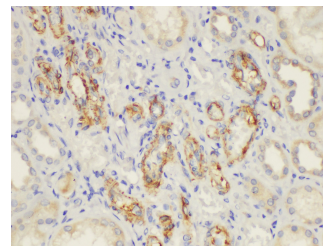
**WB 1:500-1:1000 IHC**  
**1:50-1:100**

### Data

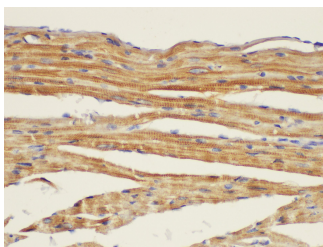


Western Blot analysis of 1)HepG2, 2)Rat brain, 3)Mouse liver, 4)Mouse brain using CD146 Ployclonal Antibody at dilution of 1:500.

**Observed Mw:57,71 kDa**  
**Calculated Mw:57,71 kDa**



Immunohistochemistry of paraffin-embedded Human kidney using CD146 Ployclonal Antibody at dilution of 1:50.



Immunohistochemistry of paraffin-embedded Mouse heart using CD146 Ployclonal Antibody at dilution of 1:50.

### Preparation & Storage

**Storage** Store at -20°C. Avoid freeze / thaw cycles.

### For Research Use Only

## Background

CD146, also known as melanoma cell adhesion molecule (MCAM) or MUC18, originally identified as a biomarker of melanoma progression, is a transmembrane glycoprotein belonging to the immunoglobulin (Ig) superfamily. Structurally, it consists of five Ig domains, a transmembrane domain, and a cytoplasmic region. In normal adult tissue, CD146 is primarily expressed by vascular endothelium and smooth muscle. CD146 is a key cell adhesion protein in vascular endothelial cell activity and angiogenesis, and has been used as a marker of circulating endothelial cells (CECs).

---

## For Research Use Only