

KLK2 Polyclonal Antibody

Catalog No. E-AB-40367

Note: Centrifuge before opening to ensure complete recovery of vial contents.

Description

Reactivity	Human, Mouse
Immunogen	Recombinant Human Kallikrein-2 protein
Host	Rabbit
Isotype	IgG
Purification	Antigen Affinity Purification
Conjugation	Unconjugated
Buffer	PBS with 0.05% Proclin300, 50% glycerol, pH7.3.

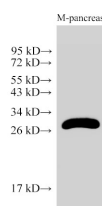
Applications

Recommended Dilution

WB 1:2000-1:3000

IHC 1:100-1:300

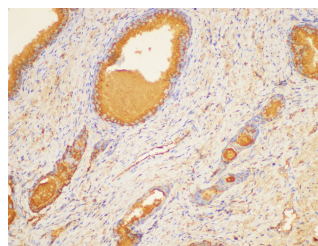
Data



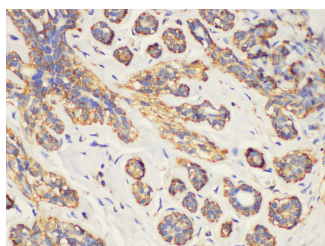
Western Blot analysis of Mouse pancreas using KLK2 Polyclonal Antibody at dilution of 1:2000.

Observed Mw: 28 kDa

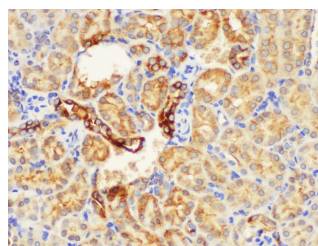
Calculated Mw: 17, 18, 24, 28 kDa



Immunohistochemistry of paraffin-embedded Human prostate using KLK2 Polyclonal Antibody at dilution of 1:200.



Immunohistochemistry of paraffin-embedded Human breast using KLK2 Polyclonal Antibody at dilution of 1:200.



Immunohistochemistry of paraffin-embedded Mouse kidney using KLK2 Polyclonal Antibody at dilution of 1:200.

Preparation & Storage

Storage Store at -20°C. Avoid freeze / thaw cycles.

For Research Use Only

Background

This gene encodes a member of the granular kallikrein protein family. Kallikreins are a subgroup of serine proteases that are clustered on chromosome 19. Members of this family are involved in a diverse array of biological functions. The protein encoded by this gene is a highly active trypsin-like serine protease that selectively cleaves at arginine residues. This protein is primarily expressed in prostatic tissue and is responsible for cleaving pro-prostate-specific antigen into its enzymatically active form. This gene is highly expressed in prostate tumor cells and may be a prognostic maker for prostate cancer risk. Alternate splicing results in both coding and non-coding transcript variants.

For Research Use Only