

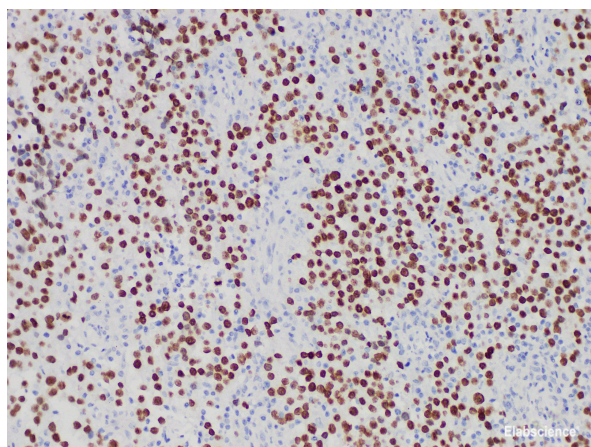
【Product Information】

Host	Mouse
Cat	PA6681
Clone NO.	YN01506m
Application	IHC-P
Reactivity	Human
Sizes	Concentrated: <input type="checkbox"/> 100μL <input type="checkbox"/> 200μL RTU: <input type="checkbox"/> 3.0mL <input type="checkbox"/> 6.0mL
Localization	Nucleus
Product /Lot	Refer to the label

【Background】

SALL4 gene is responsible for regulating the self-renewal of embryonic stem cells and is a key gene in many tumors. SALL4 is a kind of carcinoembryonic protein. Studies show that SALL4 is a sensitive and specific marker of seminoma and ovarian primordial germ cell tumor, and also a marker of invasive hepatocarcinoid subtype. SALL4 can be used as a potential target for targeted treatment of hepatocarcinoid.

【Image】



Immunohistochemistry of paraffinembedded Human testis tissue with SALL4 Monoclonal Antibody(Antigen repaired by EDTA).

【Application Information】

This product is used for immunohistochemical staining of formalin fixed paraffin embedded or frozen sections. The recommended dilution of concentrated product is 1:50-1:200, and RTU is ready to use. [Repair the antigens in pH9.0 EDTA solution by microwave or high-pressure boiling before incubating the antibodies.](#) This product is the primary antibody required for immunohistochemistry experiment, which needs to be followed with secondary antibody, DAB kit, hematoxylin staining solution and other reagents. This product is suitable for the immunohistochemistry kits produced by various manufacturers.

【Incubation】

Incubate at RT (18-30°C) for 60 min or incubate at 4°C for overnight.

【Storage and Expiration】

The concentrated antibody should be stored at -20°C protecting from light. It is recommended to sub-pack into several small tubes for the first use. Take one tube each time. Avoid freeze / thaw cycles.

The RTU antibody should be stored at 2~8°C protecting from light (Do not freeze). Please restore at 2~8°C immediately after each time use.

The expiration of this antibody is 12 months. Please follow this manual to store the antibody to avoid badly affecting the titer and effective service life of the product.

【Notices】

- 1.The product should be operated by experienced researchers.
- 2.This product is for Immunohistochemistry use only.
- 3.The product should be followed by detection kits such as Secondary antibody and DAB kits.
- 4.Protective measures should be taken to avoid contact with skin and eyes.
- 5.The product contains sodium azide as an antiseptic. Sodium azide can react with lead or copper to form an explosive metal azide. A large amount of water is used to avoid the formation of metal azides.
- 6.This product is biological resource, and its treatment should meet the relevant requirements.

For Research Use Only

A Reliable Research Partner in Life Science and Medicine

Toll-free: 1-888-852-8623

Web: www.elabscience.com

Tel: 1-832-243-6086

Email: techsupport@elabscience.com

Fax: 1-832-243-6017

【Judgment of Positive Result】

The judgment of the immunohistochemical staining results should be observed under the microscope and taken by experienced researchers.

The results of immunohistochemistry should be judged on the basis of tissue positive control and reagent negative control.

Tissue positive control: Tissue section with confirmed antigen, the result should be positive.

Reagent negative control: Use PBS buffer instead of antibody incubation, the result should be negative.

Positive result (+): It refers to tan or brown staining on specific cells without background staining

Negative result (-): It refers to no tan or brown staining results in the expected positive tissue cells.

>> Refer to the following

Tissue positive control (+), Reagent negative control (-), Test tissue (+): Indicates the antigen can be detected in the tested tissue.

Tissue positive control (+), Reagent negative control (-), Test tissue (-): Indicates that there is no or less antigen in the tested tissue.

>> Don't refer to the following

Tissue positive control (+), Reagent negative control (+), Test tissue (+)

Tissue positive control (+), Reagent negative control (+), Test tissue (-)

Tissue positive control (-), Reagent negative control (-), Test tissue (+)

Tissue positive control (-), Reagent negative control (+), Test tissue (+)

Tissue positive control (-), Reagent negative control (-), Test tissue (-)

Tissue positive control (-), Reagent negative control (-), Test tissue (+)

【Interpretation of Test Results】

1.The results of immunohistochemical staining must be established on the basis that the positive control gets a positive result and the negative control gets a negative result. The result of the experiment slice should be positive control (+) or reagent negative (-), or the result should be neglected.

2.The methods and time of antigen repair, incubation time and temperature may affect the test results. Please follow the experiment method strictly.

3.When the tissues are prepared to paraffin sections, please detect the tissue slides within one week to avoid false negative antigens.

【Limitations of Detection Methods】

Immunohistochemistry is a multi-step experimental process. Improper treatment of each step will affect the final results. Any positive staining results must be evaluated by an experienced researcher and refer to the sample cytomorphology and histopathological background. The value of the test results should also be comprehensively analyzed and judged by the experienced researcher in combination with other test results.

【Elabscience® Ready-to-Use Antibodies for IHC Adapter and Parameters】

Dako Link 48 <https://www.elabscience.com/List-detail-7049.html>

Leica BOND MAX <https://www.elabscience.com/List-detail-7052.html>

Roche Benchmark XT <https://www.elabscience.com/List-detail-7053.html>

For Research Use Only

A Reliable Research Partner in Life Science and Medicine

Toll-free: 1-888-852-8623

Web: www.elabscience.com

Tel: 1-832-243-6086

Email: techsupport@elabscience.com

Fax: 1-832-243-6017