

**Note:** Centrifuge before opening to ensure complete recovery of vial contents.

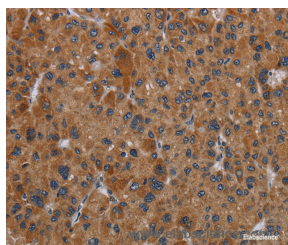
## Description

<b>Reactivity</b>	Human,Mouse
<b>Immunogen</b>	Synthetic peptide of human OMG
<b>Host</b>	Rabbit
<b>Isotype</b>	IgG
<b>Purification</b>	Affinity purification
<b>Conjugation</b>	Unconjugated
<b>Formulation</b>	PBS with 0.05% sodium azide and 50% glycerol, PH7.4

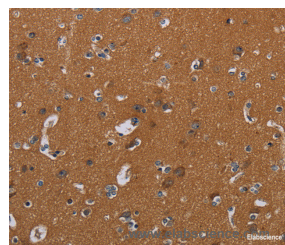
## Applications Recommended Dilution

<b>IHC</b>	1:25-1:100
------------	------------

## Data



Immunohistochemistry of paraffin-embedded Human liver cancer tissue using OMG Polyclonal Antibody at dilution 1:30



Immunohistochemistry of paraffin-embedded Human brain tissue using OMG Polyclonal Antibody at dilution 1:30

## Preparation & Storage

<b>Storage</b>	Store at -20°C. Avoid freeze / thaw cycles.
----------------	---

## Background

Oligodendrocyte myelin glycoprotein (OMG, OMgp) is a glycosylphosphatidylinositol-anchored protein expressed by neurons and oligodendrocytes that influences the development of the adult central nervous system (CNS). OMG inhibits neurite outgrowth through its interaction with the Nogo receptor. This function requires its leucine-rich repeat domain, a highly-conserved region in OMG that influences cell proliferation, formation and maintenance of myelin sheaths. OMG inhibits neurite outgrowth from rat cerebellar granule and hippocampal cells; from dorsal root ganglion explants in which growth cone collapse was observed; from rat retinal ganglion neurons; and from NG108 and PC-12 cells.

## For Research Use Only

A Reliable Research Partner in Life Science and Medicine

Toll-free: 1-888-852-8623

Web: [www.elabscience.com](http://www.elabscience.com)

Tel: 1-832-243-6086

Email: [techsupport@elabscience.com](mailto:techsupport@elabscience.com)

Fax: 1-832-243-6017