

## SPARCL1 Polyclonal Antibody

Catalog No. E-AB-16876

**Note:** Centrifuge before opening to ensure complete recovery of vial contents.

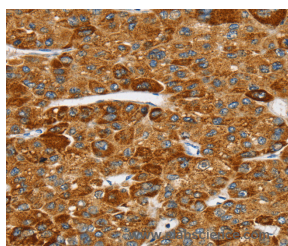
### Description

|                     |   |
|---------------------|---|
| <b>Reactivity</b>   | Human   |
| <b>Immunogen</b>    | Synthetic peptide of human SPARCL1                  |
| <b>Host</b>         | Rabbit  |
| <b>Isotype</b>      | IgG   |
| <b>Purification</b> | Affinity purification                               |
| <b>Conjugation</b>  | Unconjugated  |
| <b>Buffer</b>       | PBS with 0.05% sodium azide and 50% glycerol, PH7.4 |

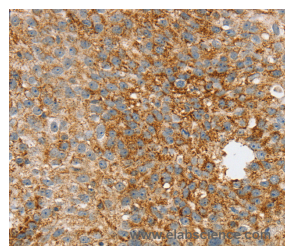
### Applications Recommended Dilution

**IHC** 1:25-1:100

### Data



Immunohistochemistry of paraffin-embedded Human liver cancer tissue using SPARCL1 Polyclonal Antibody at dilution 1:30



Immunohistochemistry of paraffin-embedded Human breast cancer tissue using SPARCL1 Polyclonal Antibody at dilution 1:30

### Preparation & Storage

**Storage** Store at -20°C. Avoid freeze / thaw cycles.

### Background

SPARCL1 also known as high endothelial venule protein (Hevin) or MAST9, is a 664 amino acid member of the SPARC family of proteins. Highly expressed in lymph node, heart, lung, brain, skeletal muscle, ovary, colon and small intestine, SPARCL1 is a secreted protein that contains one EF-hand domain, one follistatin-like

### For Research Use Only