

ECE2 Polyclonal Antibody

Catalog No. E-AB-16986

Note: Centrifuge before opening to ensure complete recovery of vial contents.

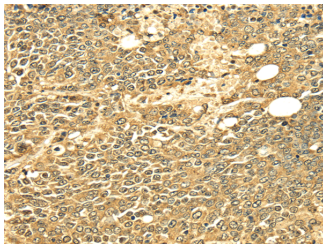
Description

Reactivity	Human, Mouse
Immunogen	Fusion protein of human ECE2
Host	Rabbit
Isotype	IgG
Purification	Affinity purification
Conjugation	Unconjugated
Buffer	PBS with 0.05% sodium azide and 50% glycerol, PH7.4

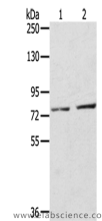
Applications Recommended Dilution

WB	1:500-2000
IHC	1:30-150

Data



Immunohistochemistry of paraffin-embedded Human ovarian cancer using ECE2 Polyclonal Antibody at dilution of 1/25
Calculated Mw:100 kDa



Western Blot analysis of A172 cells and Mouse liver tissue using ECE2 Polyclonal Antibody at dilution of 1/350

Preparation & Storage

Storage Store at -20°C. Avoid freeze / thaw cycles.

Background

This gene encodes a member of the M13 family, which includes type 2 integral membrane metalloproteinases. The encoded enzyme is a membrane-bound zinc-dependent metalloprotease. The enzyme catalyzes the cleavage of big endothelin to produce the vasoconstrictor endothelin-1, and plays a role in the processing of several neuroendocrine peptides. It may also have methyltransferase activity. Alternative splicing results in multiple transcript variants.

For Research Use Only