

## TRIM24 Polyclonal Antibody

**Catalog No.** E-AB-17454

*Note:* Centrifuge before opening to ensure complete recovery of vial contents.

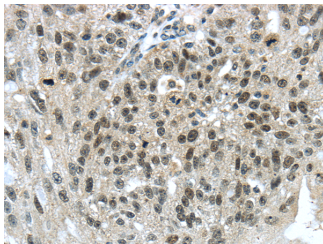
### Description

<b>Reactivity</b>	Human, Mouse
<b>Immunogen</b>	Synthetic peptide of human TRIM24
<b>Host</b>	Rabbit
<b>Isotype</b>	IgG
<b>Purification</b>	Affinity purification
<b>Conjugation</b>	Unconjugated
<b>Buffer</b>	PBS with 0.05% sodium azide and 50% glycerol, PH7.4

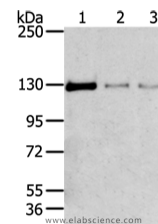
### Applications Recommended Dilution

<b>WB</b>	1:500-2000
<b>IHC</b>	1:30-150

### Data



Immunohistochemistry of paraffin-embedded Human breast cancer using TRIM24 Polyclonal Antibody at dilution of 1/40  
**Calculated Mw:117/113 kDa**



Western Blot analysis of 293T, 231 and lo2 cell using TRIM24 Polyclonal Antibody at dilution of 1/400

### Preparation & Storage

**Storage** Store at -20°C. Avoid freeze / thaw cycles.

### Background

The protein encoded by this gene mediates transcriptional control by interaction with the activation function 2 (AF2) region of several nuclear receptors, including the estrogen, retinoic acid, and vitamin D3 receptors. The protein localizes to nuclear bodies and is thought to associate with chromatin and heterochromatin-associated factors. The protein is a member of the tripartite motif (TRIM) family. The TRIM motif includes three zinc-binding domains - a RING, a B-box type 1 and a B-box type 2 - and a coiled-coil region.

### For Research Use Only