

## USP9X Polyclonal Antibody

**Catalog No.** E-AB-17533

*Note:* Centrifuge before opening to ensure complete recovery of vial contents.

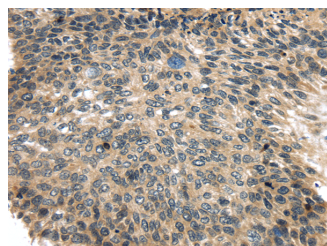
### Description

<b>Reactivity</b>	Human, Mouse
<b>Immunogen</b>	Synthetic peptide of human USP9X
<b>Host</b>	Rabbit
<b>Isotype</b>	IgG
<b>Purification</b>	Affinity purification
<b>Conjugation</b>	Unconjugated
<b>Buffer</b>	PBS with 0.05% sodium azide and 50% glycerol, PH7.4

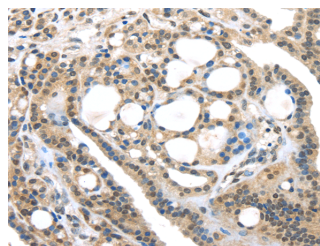
### Applications Recommended Dilution

<b>IHC</b>	1:25-100
<b>ELISA</b>	1:2000-5000

### Data



Immunohistochemistry of paraffin-embedded Human esophagus cancer tissue using USP9X Polyclonal Antibody at dilution 1:35



Immunohistochemistry of paraffin-embedded Human thyroid cancer tissue using USP9X Polyclonal Antibody at dilution 1:35

### Preparation & Storage

**Storage** Store at -20°C. Avoid freeze / thaw cycles.

### Background

This gene is a member of the peptidase C19 family and encodes a protein that is similar to ubiquitin-specific proteases. Though this gene is located on the X chromosome, it escapes X-inactivation. Mutations in this gene have been associated with Turner syndrome. Alternate transcriptional splice variants, encoding different isoforms, have been characterized.

### For Research Use Only