

IL20 Polyclonal Antibody

Catalog No. E-AB-17596

Note: Centrifuge before opening to ensure complete recovery of vial contents.

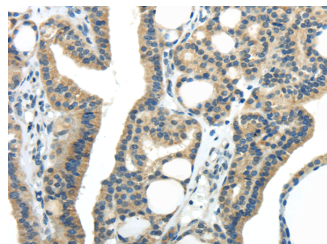
Description

| | |
|---------------------|---|
| Reactivity | Human |
| Immunogen | Synthetic peptide of human IL-20 |
| Host | Rabbit |
| Isotype | IgG |
| Purification | Affinity purification |
| Conjugation | Unconjugated |
| Buffer | PBS with 0.05% sodium azide and 50% glycerol, PH7.4 |

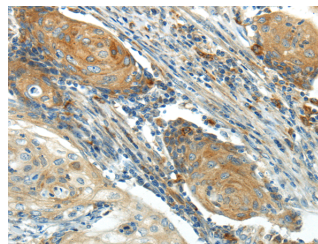
Applications Recommended Dilution

| | |
|--------------|-------------|
| IHC | 1:25-100 |
| ELISA | 1:2000-5000 |

Data



Immunohistochemistry of paraffin-embedded Human thyroid cancer tissue using IL20 Polyclonal Antibody at dilution 1:35



Immunohistochemistry of paraffin-embedded Human cervical cancer tissue using IL20 Polyclonal Antibody at dilution 1:35

Preparation & Storage

Storage Store at -20°C. Avoid freeze / thaw cycles.

Background

The protein encoded by this gene is a cytokine structurally related to interleukin 10 (IL10). This cytokine has been shown to transduce its signal through signal transducer and activator of transcription 3 (STAT3) in keratinocytes. A specific receptor for this cytokine is found to be expressed in skin and upregulated dramatically in psoriatic skin, suggesting a role for this protein in epidermal function and psoriasis.

For Research Use Only