

SMYD2 Polyclonal Antibody

Catalog No. E-AB-17599

Note: Centrifuge before opening to ensure complete recovery of vial contents.

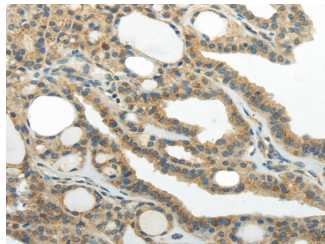
Description

| | |
|---------------------|---|
| Reactivity | Human,Mouse,Rat |
| Immunogen | Synthetic peptide of human SMYD2 |
| Host | Rabbit |
| Isotype | IgG |
| Purification | Affinity purification |
| Conjugation | Unconjugated |
| Buffer | PBS with 0.05% sodium azide and 50% glycerol, PH7.4 |

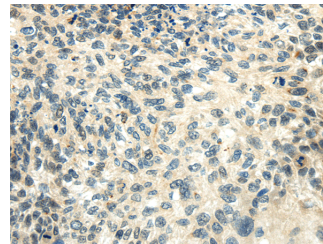
Applications Recommended Dilution

| | |
|--------------|-------------|
| IHC | 1:25-100 |
| ELISA | 1:2000-5000 |

Data



Immunohistochemistry of paraffin-embedded Human thyroid cancer tissue using SMYD2 Polyclonal Antibody at dilution 1:30



Immunohistochemistry of paraffin-embedded Human esophagus cancer tissue using SMYD2 Polyclonal Antibody at dilution 1:30

Preparation & Storage

Storage Store at -20°C. Avoid freeze / thaw cycles.

Background

SET domain-containing proteins, such as SMYD2, catalyze lysine methylation (Brown et al., 2006 [PubMed 16805913]).

For Research Use Only