

## SMYD2 Polyclonal Antibody

Catalog No. E-AB-17600

**Note:** Centrifuge before opening to ensure complete recovery of vial contents.

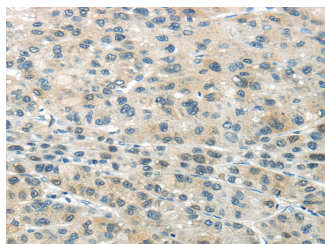
### Description

<b>Reactivity</b>	Human,Mouse,Rat
<b>Immunogen</b>	Synthetic peptide of human SMYD2
<b>Host</b>	Rabbit
<b>Isotype</b>	IgG
<b>Purification</b>	Affinity purification
<b>Conjugation</b>	Unconjugated
<b>Buffer</b>	PBS with 0.05% sodium azide and 50% glycerol, PH7.4

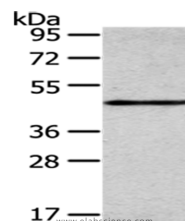
### Applications Recommended Dilution

<b>WB</b>	1:200-1000
<b>IHC</b>	1:25-100
<b>ELISA</b>	1:1000-2000

### Data



Immunohistochemistry of paraffin-embedded Human liver cancer using SMYD2 Polyclonal Antibody at dilution of 1/35  
**Calculated Mw:50 kDa**



Western Blot analysis of Mouse heart tissue using SMYD2 Polyclonal Antibody at dilution of 1/350

### Preparation & Storage

**Storage** Store at -20°C. Avoid freeze / thaw cycles.

### Background

SET domain-containing proteins, such as SMYD2, catalyze lysine methylation (Brown et al., 2006 [PubMed 16805913]).

### For Research Use Only