

Chromogranin A Polyclonal Antibody

Catalog No. E-AB-17604

Note: Centrifuge before opening to ensure complete recovery of vial contents.

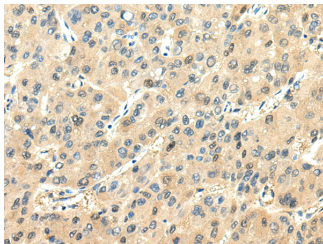
Description

| | |
|---------------------|---|
| Reactivity | Human, Mouse, Rat |
| Immunogen | Synthetic peptide of human CHGA |
| Host | Rabbit |
| Isotype | IgG |
| Purification | Affinity purification |
| Conjugation | Unconjugated |
| Buffer | PBS with 0.05% sodium azide and 50% glycerol, PH7.4 |

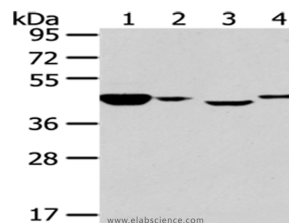
Applications Recommended Dilution

WB 1:500-2000, IHC
1:25-100, ELISA
1:2000-5000

Data



Immunohistochemistry of paraffin-embedded Human liver cancer using Chromogranin A Polyclonal Antibody at dilution of 1/20
Calculated Mw:51 kDa



Western Blot analysis of A549 and 293T cells, Human normal kidney tissue and HeLa cells using Chromogranin A Polyclonal Antibody at dilution of 1/200

Preparation & Storage

Storage Store at -20°C. Avoid freeze / thaw cycles.

Background

The protein encoded by this gene is a member of the chromogranin/secretogranin family of neuroendocrine secretory proteins. It is found in secretory vesicles of neurons and endocrine cells. This gene product is a precursor to three biologically active peptides; vasostatin, pancreastatin, and parastatin. These peptides act as autocrine or paracrine negative modulators of the neuroendocrine system. Two other peptides, catestatin and chromofungin, have antimicrobial activity and antifungal activity, respectively. Two transcript variants encoding different isoforms have been found for this gene.

For Research Use Only