

Chromogranin A Polyclonal Antibody

Catalog No. E-AB-17605

Note: Centrifuge before opening to ensure complete recovery of vial contents.

Description

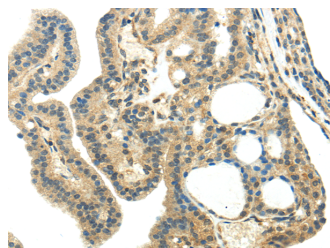
Reactivity	Human,Mouse,Rat
Immunogen	Synthetic peptide of human CHGA
Host	Rabbit
Isotype	IgG
Purification	Affinity purification
Conjugation	Unconjugated
Buffer	PBS with 0.05% sodium azide and 50% glycerol, PH7.4

Applications

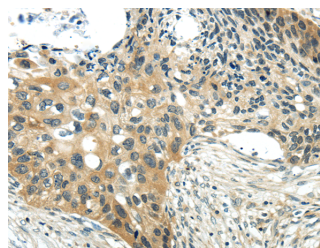
Recommended Dilution

IHC	1:25-100
ELISA	1:1000-2000

Data



Immunohistochemistry of paraffin-embedded Human thyroid cancer using Chromogranin A Polyclonal Antibody at dilution of 1/35
Calculated Mw:51 kDa



Immunohistochemistry of paraffin-embedded Human esophagus cancer using Chromogranin A Polyclonal Antibody at dilution of 1/35

Preparation & Storage

Storage Store at -20°C. Avoid freeze / thaw cycles.

Background

The protein encoded by this gene is a member of the chromogranin/secretogranin family of neuroendocrine secretory proteins. It is found in secretory vesicles of neurons and endocrine cells. This gene product is a precursor to three biologically active peptides; vasostatin, pancreastatin, and parastatin. These peptides act as autocrine or paracrine negative modulators of the neuroendocrine system. Two other peptides, catestatin and chromofungin, have antimicrobial activity and antifungal activity, respectively. Two transcript variants encoding different isoforms have been found for this gene.

For Research Use Only