

## XKR3 Polyclonal Antibody

Catalog No. E-AB-17629

**Note:** Centrifuge before opening to ensure complete recovery of vial contents.

### Description

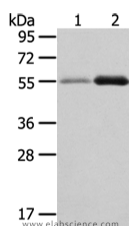
<b>Reactivity</b>	Human
<b>Immunogen</b>	Synthetic peptide of human XKR3
<b>Host</b>	Rabbit
<b>Isotype</b>	IgG
<b>Purification</b>	Affinity purification
<b>Conjugation</b>	Unconjugated
<b>Buffer</b>	PBS with 0.05% sodium azide and 50% glycerol, PH7.4

### Applications

### Recommended Dilution

<b>WB</b>	1:500-2000
<b>ELISA</b>	1:2000-5000

### Data



Western Blot analysis of Human normal stomach and thyroid cancer tissue using XKR3 Polyclonal Antibody at dilution of 1/330

**Calculated Mw:53 kDa**

### Preparation & Storage

**Storage** Store at -20°C. Avoid freeze / thaw cycles.

### Background

XKRX (MIM 300684) and XKR3 are homologs of the Kell blood group precursor XK (MIM 314850), which is a putative membrane transporter and a component of the XK/Kell complex of the Kell blood group system (Calenda et al., 2006 [PubMed 16431037]).

### For Research Use Only