

ZBTB2 Polyclonal Antibody

Catalog No. E-AB-17637

Note: Centrifuge before opening to ensure complete recovery of vial contents.

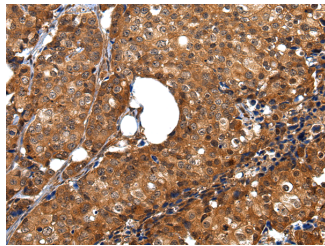
Description

Reactivity	Human
Immunogen	Synthetic peptide of human ZBTB2
Host	Rabbit
Isotype	IgG
Purification	Affinity purification
Conjugation	Unconjugated
Buffer	PBS with 0.05% sodium azide and 50% glycerol, PH7.4

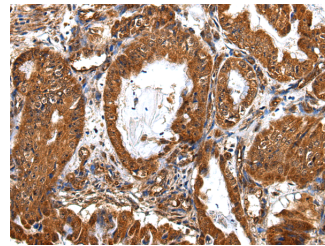
Applications Recommended Dilution

IHC 1:30-150

Data



Immunohistochemistry of paraffin-embedded Human breast cancer tissue using ZBTB2 Polyclonal Antibody at dilution 1:40



Immunohistochemistry of paraffin-embedded Human esophagus cancer tissue using ZBTB2 Polyclonal Antibody at dilution 1:40

Preparation & Storage

Storage Store at -20°C. Avoid freeze / thaw cycles.

Background

ZBTB2 is a 514 amino acid nuclear protein that contains one BTB (POZ) domain and 4 C2H2-type zinc fingers. ZBTB25, also known as ZNF46 or KUP, is a 435 amino acid nuclear protein that is expressed mainly in hematopoietic cells and testis and contains one BTB (POZ) domain and 2 C2H2-type zinc fingers.

For Research Use Only