

ZFAND2A Polyclonal Antibody

Catalog No. E-AB-17638

Note: Centrifuge before opening to ensure complete recovery of vial contents.

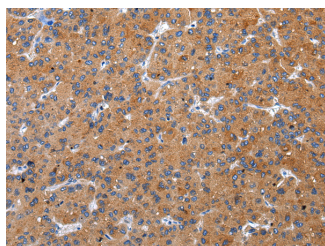
Description

Reactivity	Human
Immunogen	Synthetic peptide of human ZFAND2A
Host	Rabbit
Isotype	IgG
Purification	Affinity purification
Conjugation	Unconjugated
Buffer	PBS with 0.05% sodium azide and 50% glycerol, PH7.4

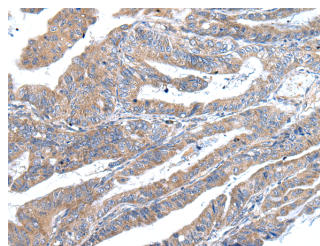
Applications Recommended Dilution

IHC	1:25-100
ELISA	1:1000-2000

Data



Immunohistochemistry of paraffin-embedded Human liver cancer using ZFAND2A Polyclonal Antibody at dilution of 1/30
Calculated Mw:16 kDa



Immunohistochemistry of paraffin-embedded Human esophagus cancer using ZFAND2A Polyclonal Antibody at dilution of 1/30

Preparation & Storage

Storage Store at -20°C. Avoid freeze / thaw cycles.

Background

ZFAND2A (AN1-type zinc finger protein 2A) is a 171 amino acid protein containing two AN1-type zinc fingers. AN1-type zinc fingers contain six conserved cysteines, two histidines and have a dimetal (zinc)-bound alpha/beta fold. The gene encoding ZFAND2A maps to human chromosome 7, which houses over 1,000 genes and comprises nearly 5% of the human genome.

For Research Use Only