

ZFP30 Polyclonal Antibody

Catalog No. E-AB-17642

Note: Centrifuge before opening to ensure complete recovery of vial contents.

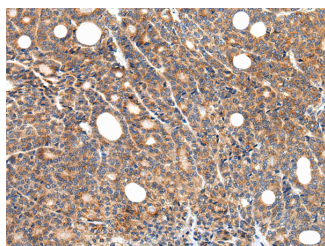
Description

Reactivity	Human
Immunogen	Synthetic peptide of human ZFP30
Host	Rabbit
Isotype	IgG
Purification	Affinity purification
Conjugation	Unconjugated
Buffer	PBS with 0.05% sodium azide and 50% glycerol, PH7.4

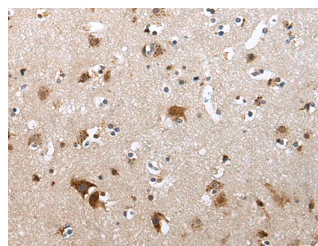
Applications Recommended Dilution

IHC	1:25-100
ELISA	1:2000-5000

Data



Immunohistochemistry of paraffin-embedded Human thyroid cancer tissue using ZFP30 Polyclonal Antibody at dilution 1:30



Immunohistochemistry of paraffin-embedded Human brain tissue using ZFP30 Polyclonal Antibody at dilution 1:30

Preparation & Storage

Storage Store at -20°C. Avoid freeze / thaw cycles.

Background

ZFP30 (zinc finger protein 30 homolog) is a 519 amino acid protein that localizes to the nucleus and is composed of thirteen C2H2-type zinc fingers and one KRAB domain. ZFP30 is encoded by a gene located on human chromosome 19, which consists of over 63 million bases, houses approximately 1,400 genes and is recognized for having the greatest gene density of the human chromosomes. It is the genetic home for a number of immunoglobulin (Ig) superfamily members, including the killer cell and leukocyte Ig-like receptors, a number of ICAMs, the CEACAM and PSG families, and Fc receptors (FcRs).

For Research Use Only