

## ARFGAP2 Polyclonal Antibody

Catalog No. E-AB-17646

**Note:** Centrifuge before opening to ensure complete recovery of vial contents.

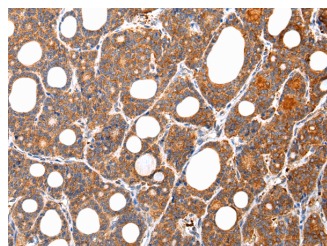
### Description

<b>Reactivity</b>	Human,Mouse,Rat
<b>Immunogen</b>	Synthetic peptide of human ARFGAP2
<b>Host</b>	Rabbit
<b>Isotype</b>	IgG
<b>Purification</b>	Affinity purification
<b>Conjugation</b>	Unconjugated
<b>Buffer</b>	PBS with 0.05% sodium azide and 50% glycerol, PH7.4

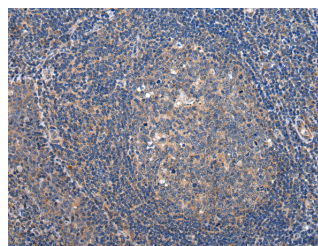
### Applications Recommended Dilution

<b>IHC</b>	1:25-100
<b>ELISA</b>	1:2000-5000

### Data



Immunohistochemistry of paraffin-embedded Human thyroid cancer tissue using ARFGAP2 Polyclonal Antibody at dilution 1:35



Immunohistochemistry of paraffin-embedded Human tonsil tissue using ARFGAP2 Polyclonal Antibody at dilution 1:35

### Preparation & Storage

**Storage** Store at -20°C. Avoid freeze / thaw cycles.

### Background

GTPase-activating protein (GAP) for ADP ribosylation factor 1 (ARF1). Implicated in coatamer-mediated protein transport between the Golgi complex and the endoplasmic reticulum. Hydrolysis of ARF1-bound GTP may lead to dissociation of coatamer from Golgi-derived membranes to allow fusion with target membranes.

### For Research Use Only