

## CBX7 Polyclonal Antibody

**Catalog No.** E-AB-17697

*Note:* Centrifuge before opening to ensure complete recovery of vial contents.

### Description

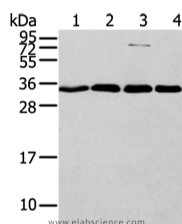
<b>Reactivity</b>	Human,Mouse,Rat
<b>Immunogen</b>	Synthetic peptide of human CBX7
<b>Host</b>	Rabbit
<b>Isotype</b>	IgG
<b>Purification</b>	Affinity purification
<b>Conjugation</b>	Unconjugated
<b>Buffer</b>	PBS with 0.05% sodium azide and 50% glycerol, PH7.4

### Applications

### Recommended Dilution

<b>WB</b>	1:500-2000
<b>ELISA</b>	1:2000-5000

### Data



Western Blot analysis of HeLa, Jurkat, 293T and lovo cell using CBX7 Polyclonal Antibody at dilution of 1/200

**Calculated Mw:28 kDa**

### Preparation & Storage

**Storage** Store at -20°C. Avoid freeze / thaw cycles.

### Background

CBX7 (Chromobox protein homolog 7) is a 251 amino acid nuclear protein that contains one N-terminal chromo domain and one C-terminal Pc box. Highly expressed in kidney, brain, heart and skeletal muscle, with weaker expression in peripheral blood leukocytes, CBX7 functions as a component of the chromatin-associated polycomb complex (PcG) and is involved in maintaining the transcriptionally repressed state of target genes.

### For Research Use Only