

## Recombinant Human Interleukin-15/IL-15 Protein (Active)

Catalog No. PKSH030302

**Note:** Centrifuge before opening to ensure complete recovery of vial contents.

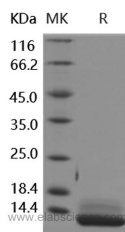
### Description

<b>Synonyms</b>	IL-15;Interleukin 15;IL15
<b>Species</b>	Human
<b>Expression Host</b>	E.coli
<b>Sequence</b>	Asn 49-Ser 162
<b>Accession</b>	NP_000576.1
<b>Calculated Molecular Weight</b>	12.8 kDa
<b>Bioactivity</b>	Measured in a cell proliferation assay using MO7e human megakaryocytic leukemic cells.The EC50 for this effect is typically 0.8-4 ng/mL.

### Properties

<b>Purity</b>	> 95 % as determined by reducing SDS-PAGE.
<b>Storage</b>	Lyophilized proteins are stable for up to 12 months when stored at -20 to -80°C. Reconstituted protein solution can be stored at 4-8°C for 2-7 days. Aliquots of reconstituted samples are stable at < -20°C for 3 months.
<b>Shipping</b>	This product is provided as lyophilized powder which is shipped with ice packs.
<b>Formulation</b>	Lyophilized from sterile 50 mM Tris, 200 mM NaCl, pH 8.0
<b>Reconstitution</b>	Please refer to the printed manual for detailed information.

### Data



### Background

The protein encoded by IL15 gene is a cytokine that regulates T and natural killer cell activation and proliferation. This cytokine and interleukine 2 share many biological activities. They are found to bind common hematopoietin receptor subunits, and may compete for the same receptor, and thus negatively regulate each other's activity. The number of CD8+ memory cells is shown to be controlled by a balance between this cytokine and IL2. This cytokine induces the activation of JAK kinases, as well as the phosphorylation and activation of transcription activators STAT3, STAT5, and STAT6. Studies of the mouse counterpart suggested that this cytokine may increase the expression of apoptosis inhibitor BCL2L1/BCL-x(L), possibly through the transcription activation activity of STAT6, and thus prevent apoptosis. Alternatively spliced transcript variants of this gene have been reported.

### For Research Use Only