

# Recombinant Human EphA7/EHK3 Protein (His & GST Tag)



Catalog Number:PKSH030354

**Note:** Centrifuge before opening to ensure complete recovery of vial contents.

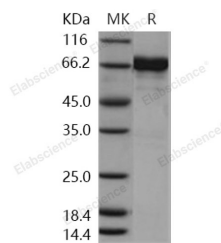
## Description

<b>Synonyms</b>	Ephrin Type-A Receptor 7;EPH Homology Kinase 3;EHK-3;EPH-Like Kinase 11;EK11;hEK11;EPHA7;EHK3;HEK11
<b>Species</b>	Human
<b>Expression Host</b>	Baculovirus-Insect Cells
<b>Sequence</b>	Gly579-Val998
<b>Accession</b>	NP_004431
<b>Calculated Molecular Weight</b>	75.2 kDa
<b>Observed molecular weight</b>	76 kDa
<b>Tag</b>	N-His-GST
<b>Bioactivity</b>	The specific activity was determined to be 9.5 nmol/min/mg using Poly(Glu:Tyr) 4:1 as substrate.

## Properties

<b>Purity</b>	> 94 % as determined by reducing SDS-PAGE.
<b>Endotoxin</b>	< 1.0 EU per µg of the protein as determined by the LAL method.
<b>Storage</b>	Store at < -20°C, stable for 6 months. Please minimize freeze-thaw cycles.
<b>Shipping</b>	This product is provided as liquid. It is shipped at frozen temperature with blue ice/gel packs. Upon receipt, store it immediately at < - 20°C.
<b>Formulation</b>	Supplied as sterile solution of 20mM Tris, 500mM NaCl, pH 8.0, 10% glycerol
<b>Reconstitution</b>	Not Applicable

## Data



> 94 % as determined by reducing SDS-PAGE.

## Background

Ephrin type-A receptor 7, also known as EphA7, belongs to the ephrin receptor subfamily of the protein-tyrosine kinase family which 16 known receptors (14 found in mammals) are involved: EPHA1, EPHA2, EPHA3, EPHA4, EPHA5, EPHA6, EPHA7, EPHA8, EPHA9, EPHA10, EPHB1, EPHB2, EPHB3, EPHB4, EPHB5, EPHB6. The Eph family of receptor tyrosine kinases (comprising EphA and EphB receptors) has been implicated in synapse formation and the regulation of synaptic function and plasticity<sup>6</sup>. Eph receptor-mediated signaling, which is triggered by ephrins<sup>7</sup>, probably modifies the properties of synapses during synaptic activation and remodeling. Ephrin receptors are components of cell signalling pathways involved in animal growth and development, forming the largest sub-family of receptor tyrosine kinases (RTKs). Ligand-mediated activation of Ephs induce various important downstream effects and Eph receptors have been studied for their potential roles in the development of cancer. Down-regulation of EphA7 secondary to

## For Research Use Only

A Reliable Research Partner in Life Science and Medicine

Toll-free: 1-888-852-8623

Web: [www.elabscience.com](http://www.elabscience.com)

Tel: 1-832-243-6086

Email: [techsupport@elabscience.com](mailto:techsupport@elabscience.com)

Fax: 1-832-243-6017

# Recombinant Human EphA7/EHK3 Protein (His & GST Tag)



Catalog Number:PKSH030354

---

hypermethylation has been reported in colorectal cancer. The expression of EphA7 was reduced in all tested gastric cancer cell lines; however, there is marked variability in expression among gastric carcinoma specimens. EphA7 may have roles in the pathogenesis and development of gastric carcinomas.

---

## For Research Use Only

A Reliable Research Partner in Life Science and Medicine

Toll-free: 1-888-852-8623

Tel: 1-832-243-6086

Fax: 1-832-243-6017

Web: [www.elabscience.com](http://www.elabscience.com)

Email: [techsupport@elabscience.com](mailto:techsupport@elabscience.com)