

Recombinant Human TLK2/PKU-ALPHA Protein (His&GST Tag)

Catalog No. PKSH030363

Note: Centrifuge before opening to ensure complete recovery of vial contents.

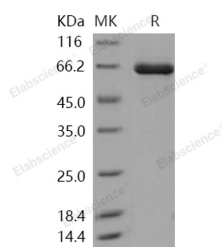
Description

Synonyms	HsHPK;PKU-ALPHA
Species	Human
Expression Host	Baculovirus-Insect Cells
Sequence	Leu 397-Asn 772
Accession	Q86UE8-1
Calculated Molecular Weight	71.3 kDa
Observed molecular weight	65 kDa
Tag	N-His-GST
Bioactivity	Not validated for activity

Properties

Purity	> 95 % as determined by reducing SDS-PAGE.
Endotoxin	< 1.0 EU per µg of the protein as determined by the LAL method.
Storage	Store at < -20°C, stable for 6 months. Please minimize freeze-thaw cycles.
Shipping	This product is provided as liquid. It is shipped at frozen temperature with blue ice/gel packs. Upon receipt, store it immediately at < -20°C.
Formulation	Supplied as sterile solution of 20mM Tris, 500mM NaCl, 0.5mM PMSF, pH 8.0
Reconstitution	Not Applicable

Data



> 95 % as determined by reducing SDS-PAGE.

Background

Serine / threonine-protein kinase tousled-like 2; also known as PKU-alpha; Tousled-like kinase 2 and TLK2; is a nucleus protein which belongs to the protein kinase superfamily and Ser/Thr protein kinase family. The tousled-like kinases are an evolutionarily conserved family of proteins implicated in DNA repair; DNA replication and mitosis in metazoans and plants. Their absence from the yeasts and other eukaryotic 'microbes' suggests a specific role for them in the development of multicellular organisms. Tousled-like kinase 2 / TLK2 is widely expressed. It is present in fetal placenta; liver; kidney; pancreas; heart and skeletal muscle. It is also found in adult cell lines. Tousled-like kinase 2 / TLK2 contains one protein

For Research Use Only

kinase domain. Tausled-like kinase 2 / TLK2 is rapidly and transiently inhibited by phosphorylation following the generation of DNA double-stranded breaks during S-phase. This is cell cycle checkpoint and ATM-pathway dependent and appears to regulate processes involved in chromatin assembly.