

# Recombinant Human AKT2/PKB beta Protein (His & GST Tag)



Catalog Number:PKSH030382

**Note:** Centrifuge before opening to ensure complete recovery of vial contents.

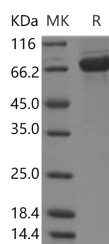
## Description

<b>Synonyms</b>	HIHGGH;PKBB;PKBBETA;PRKBB;RAC-BETA
<b>Species</b>	Human
<b>Expression Host</b>	Baculovirus-Insect Cells
<b>Sequence</b>	Met 1-Glu481
<b>Accession</b>	NP_001617.1
<b>Calculated Molecular Weight</b>	83.6 kDa
<b>Tag</b>	N-His-GST

## Properties

<b>Purity</b>	> 90 % as determined by reducing SDS-PAGE.
<b>Endotoxin</b>	< 1.0 EU per µg of the protein as determined by the LAL method.
<b>Storage</b>	Store at < -20°C, stable for 6 months. Please minimize freeze-thaw cycles.
<b>Shipping</b>	This product is provided as liquid. It is shipped at frozen temperature with blue ice/gel packs. Upon receipt, store it immediately at < - 20°C.
<b>Formulation</b>	Supplied as sterile solution of 20 mM Tris, 500 mM NaCl, 10 % glycerol,pH 7.4
<b>Reconstitution</b>	Not Applicable

## Data



> 90 % as determined by reducing SDS-PAGE.

## Background

AKT2 (AKT Serine/Threonine Kinase 2) is a Protein Coding gene. Diseases associated with AKT2 include Hypoinsulinemic Hypoglycemia With Hemihypertrophy and Diabetes Mellitus, Noninsulin-Dependent. Among its related pathways are Constitutive Signaling by AKT1 E17K in Cancer and RANK Signaling in Osteoclasts. Gene Ontology (GO) annotations related to this gene include transferase activity, transferring phosphorus-containing groups and protein tyrosine kinase activity. An important paralog of this gene is AKT1.

## For Research Use Only

A Reliable Research Partner in Life Science and Medicine

Toll-free: 1-888-852-8623

Web: [www.elabscience.com](http://www.elabscience.com)

Tel: 1-832-243-6086

Email: [techsupport@elabscience.com](mailto:techsupport@elabscience.com)

Fax: 1-832-243-6017