

Recombinant Human PTK6/Brk Protein (GST Tag)

Catalog No. PKSH030398

Note: Centrifuge before opening to ensure complete recovery of vial contents.

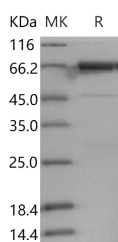
Description

Synonyms	BRK
Species	Human
Expression Host	Baculovirus-Insect Cells
Sequence	Met 1-Thr 451
Accession	NP_005966.1
Calculated Molecular Weight	78.0 kDa
Observed molecular weight	70 kDa
Tag	N-GST
Bioactivity	Not validated for activity

Properties

Purity	> 89 % as determined by reducing SDS-PAGE.
Endotoxin	< 1.0 EU per µg of the protein as determined by the LAL method.
Storage	Store at < -20°C, stable for 6 months. Please minimize freeze-thaw cycles.
Shipping	This product is provided as liquid. It is shipped at frozen temperature with blue ice/gel packs. Upon receipt, store it immediately at < -20°C.
Formulation	Supplied as sterile solution of 50mM Tris, 100mM NaCl, pH 8.0, 10% glycerol
Reconstitution	Not Applicable

Data



> 89 % as determined by reducing SDS-PAGE.

Background

Tyrosine kinase (PTKs) is a protein that carry out tyrosine phosphorylation, which play a fundamental role in cell proliferation, survival, adhesion, and motility and have also been demenstrated to mediate malignant cell transformation. Overexpression of this protein in mammary epithelial cells leads to sensitization of the cells to epidermal growth factor and results in a partially transformed phenotype. Two classes of PTKs are present in cells: the transmembrane receptor PTKs and the non-receptor PTKs. Tyrosine kinase(PTKs)-6/ BRK is a cytoplasmic non-receptor protein kinase which may function as an intracellular signal transducer in epithelial tissues. Tyrosine kinase(PTKs)-6/ BRK has been shown to

For Research Use Only

undergo autophosphorylation. It has been found that the constitutive expression of the tyrosine kinase(PTKs)-6/ BRK is in a large proportion of cutaneous T-cell lymphomas and other transformed T- and B-cell populations. State BRK expression was also induced in normal T-cells. In clinical, the cytoplasmic tyrosine kinase PTK6 (BRK) shows elevated expression in approximately two-thirds of primary breast tumours, and is implicated in EGF receptor-dependent signalling and epithelial tumorigenesis.

For Research Use Only

Toll-free: 1-888-852-8623

Web: www.elabscience.com

Tel: 1-832-243-6086

Email: techsupport@elabscience.com

Fax: 1-832-243-6017