

Recombinant Human MKK6 Protein (207 Ser/Asp, 211 Thr/Asp, His & GST Tag)



Catalog Number:PKSH030414

Note: Centrifuge before opening to ensure complete recovery of vial contents.

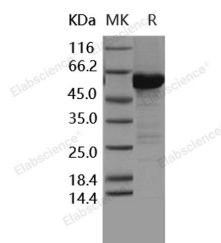
Description

Synonyms	MAPKK6;MEK6;MKK6;PRKMK6;SAPKK-3;SAPKK3;MAP2K6
Species	Human
Expression Host	Baculovirus-Insect Cells
Sequence	Met 1-Asp 334; Ser 207/Asp; Thr 211/Asp
Accession	P52564-1
Calculated Molecular Weight	65.3 kDa
Observed molecular weight	60 kDa
Tag	N-His-GST
Bioactivity	The specific activity was determined to be 1250 nmol/min/mg using inactive MAPK14 as substrate.

Properties

Purity	> 88 % as determined by reducing SDS-PAGE.
Endotoxin	< 1.0 EU per µg of the protein as determined by the LAL method.
Storage	Store at < -20°C, stable for 6 months. Please minimize freeze-thaw cycles.
Shipping	This product is provided as liquid. It is shipped at frozen temperature with blue ice/gel packs. Upon receipt, store it immediately at < -20°C.
Formulation	Supplied as sterile solution of 20mM Tris, 500mM NaCl, pH 8.0, 10% glycerol
Reconstitution	Not Applicable

Data



> 88 % as determined by reducing SDS-PAGE.

Background

Dual specificity mitogen-activated protein kinase kinase 6; also known as MAP kinase kinase 6; MAPKK 6; MAPK / ERK kinase 6; SAPKK3; MAP2K6 and MKK6; is a protein which belongs to the protein kinase superfamily; STE Ser / Thr protein kinase family and MAP kinase kinase subfamily. MAP2K6 / MKK6 contains one protein kinase domain. Mitogen-activated protein kinases are members of a conserved cascade of kinases involved in many signal transduction pathways. They stimulate phosphorylation of transcription factors in response to extracellular signals such as growth factors; cytokines; ultraviolet light; and stress-inducing agents. MAP2K6 / MKK6 exists in a variety of alternatively spliced isoforms with distinct patterns of tissue expression. Isoform 2 of MAP2K6 / MKK6 is only expressed in skeletal muscle. Isoform 1 of MAP2K6 / MKK6 is expressed in skeletal muscle; heart; and in lesser extent in liver or pancreas.

For Research Use Only

A Reliable Research Partner in Life Science and Medicine

Toll-free: 1-888-852-8623

Web: www.elabscience.com

Tel: 1-832-243-6086

Email: techsupport@elabscience.com

Fax: 1-832-243-6017