

## Recombinant Human MKK6 Protein (207 Ser/Asp, 211 Thr/Asp, His & GST Tag)

Catalog No. PKSH030414

**Note:** Centrifuge before opening to ensure complete recovery of vial contents.

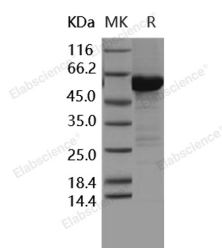
### Description

|                                    |   |
|------------------------------------|---|
| <b>Synonyms</b>                    | MAPKK6;MEK6;MKK6;PRKMK6;SAPKK-3;SAPKK3;MAP2K6   |
| <b>Species</b>                     | Human   |
| <b>Expression Host</b>             | Baculovirus-Insect Cells  |
| <b>Sequence</b>                    | Met 1-Asp 334; Ser 207/Asp; Thr 211/Asp   |
| <b>Accession</b>                   | P52564-1  |
| <b>Calculated Molecular Weight</b> | 65.3 kDa  |
| <b>Observed molecular weight</b>   | 60 kDa  |
| <b>Tag</b>                         | N-His-GST   |
| <b>Bioactivity</b>                 | The specific activity was determined to be 1250 nmol/min/mg using inactive MAPK14 as substrate. |

### Properties

|                       |   |
|-----------------------|---|
| <b>Purity</b>         | > 88 % as determined by reducing SDS-PAGE.  |
| <b>Endotoxin</b>      | < 1.0 EU per µg of the protein as determined by the LAL method.   |
| <b>Storage</b>        | Store at < -20°C, stable for 6 months. Please minimize freeze-thaw cycles.  |
| <b>Shipping</b>       | This product is provided as liquid. It is shipped at frozen temperature with blue ice/gel packs. Upon receipt, store it immediately at < -20°C. |
| <b>Formulation</b>    | Supplied as sterile solution of 20mM Tris, 500mM NaCl, pH 8.0, 10% glycerol   |
| <b>Reconstitution</b> | Not Applicable  |

### Data



> 88 % as determined by reducing SDS-PAGE.

### Background

Dual specificity mitogen-activated protein kinase kinase 6; also known as MAP kinase kinase 6; MAPKK 6; MAPK / ERK kinase 6; SAPKK3; MAP2K6 and MKK6; is a protein which belongs to the protein kinase superfamily; STE Ser / Thr protein kinase family and MAP kinase kinase subfamily. MAP2K6 / MKK6 contains one protein kinase domain.

### For Research Use Only

Mitogen-activated protein kinases are members of a conserved cascade of kinases involved in many signal transduction pathways. They stimulate phosphorylation of transcription factors in response to extracellular signals such as growth factors; cytokines; ultraviolet light; and stress-inducing agents. MAP2K6 / MKK6 exists in a variety of alternatively spliced isoforms with distinct patterns of tissue expression. Isoform 2 of MAP2K6 / MKK6 is only expressed in skeletal muscle. Isoform 1 of MAP2K6 / MKK6 is expressed in skeletal muscle; heart; and in lesser extent in liver or pancreas.