

Recombinant Human CD3D & CD3E Heterodimer Protein

Catalog No. PKSH030479

Note: Centrifuge before opening to ensure complete recovery of vial contents.

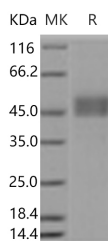
Description

Synonyms	T-Cell Surface Glycoprotein CD3 Delta Chain;T-Cell Receptor T3 Delta Chain;CD3d;CD3D;T3D
Species	Human
Expression Host	HEK293 Cells
Sequence	Met 1-Ala105&Met 1-Asp126
Accession	P04234-1&P07766-1
Calculated Molecular Weight	37.5&40 kDa
Observed molecular weight	45-50 kDa
Tag	C-Flag-hFc
Bioactivity	Measured by its binding ability in a functional ELISA. Immobilized human CD3D & CD3E Heterodimer Protein at 10 µg/ml (100 µl/well) can bind OKT3-mIgG2a. The EC50 of OKT3-mIgG2a is 0.07-0.17 µg/ml.

Properties

Purity	> 90 % as determined by reducing SDS-PAGE.
Endotoxin	< 1.0 EU per µg of the protein as determined by the LAL method.
Storage	Generally, lyophilized proteins are stable for up to 12 months when stored at -20 to -80°C. Reconstituted protein solution can be stored at 4-8°C for 2-7 days. Aliquots of reconstituted samples are stable at < -20°C for 3 months.
Shipping	This product is provided as lyophilized powder which is shipped with ice packs.
Formulation	Lyophilized from sterile PBS, pH 7.4 Normally 5 % - 8 % trehalose, mannitol and 0.01% Tween80 are added as protectants before lyophilization. Please refer to the specific buffer information in the printed manual.
Reconstitution	Please refer to the printed manual for detailed information.

Data



> 90 % as determined by reducing SDS-PAGE.

For Research Use Only

Background

T-cell surface glycoprotein CD3D & CD3E, also known as CD3 delta & CD3 epsilon chain, are single-pass type I membrane proteins. CD3D, together with CD3-epsilon(CD3E), CD3-gamma and CD3-zeta, and the T-cell receptor alpha/beta and gamma/delta heterodimers, forms the T cell receptor-CD3 complex. T cell receptor-CD3 complex plays an important role in coupling antigen recognition to several intracellular signal-transduction pathways.

For Research Use Only