

## Recombinant Human XRCC5 & XRCC6 Heterodimer Protein

Catalog No. PKSH030480

*Note:* Centrifuge before opening to ensure complete recovery of vial contents.

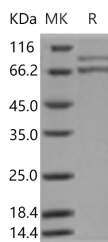
### Description

<b>Synonyms</b>	KARP-1;KARP1;KU80;Ku86;KUB2;NFIV
<b>Species</b>	Human
<b>Expression Host</b>	Baculovirus-Insect Cells
<b>Sequence</b>	Met 1-Ile732&Met 1-Asp609
<b>Accession</b>	P13010&P12956
<b>Calculated Molecular Weight</b>	85&72 kDa
<b>Observed molecular weight</b>	70 & 85 kDa
<b>Tag</b>	N-His
<b>Bioactivity</b>	Not validated for activity

### Properties

<b>Purity</b>	> 90 % as determined by reducing SDS-PAGE.
<b>Endotoxin</b>	< 1.0 EU per µg of the protein as determined by the LAL method.
<b>Storage</b>	Generally, lyophilized proteins are stable for up to 12 months when stored at -20 to -80°C. Reconstituted protein solution can be stored at 4-8°C for 2-7 days. Aliquots of reconstituted samples are stable at < -20°C for 3 months.
<b>Shipping</b>	This product is provided as lyophilized powder which is shipped with ice packs.
<b>Formulation</b>	Lyophilized from sterile 20mM Tris, 500mM NaCl, 10% glycerol, pH 8.0 Normally 5 % - 8 % trehalose, mannitol and 0.01% Tween80 are added as protectants before lyophilization. Please refer to the specific buffer information in the printed manual.
<b>Reconstitution</b>	Please refer to the printed manual for detailed information.

### Data



> 90 % as determined by reducing SDS-PAGE.

### Background

X-ray repair cross-complementing protein 5, also known as 86 kDa subunit of Ku antigen, ATP-dependent DNA helicase 2 subunit 2, ATP-dependent DNA helicase II 80 kDa subunit, CTC box-binding factor 85 kDa subunit, DNA repair

### For Research Use Only

protein XRCC5, Lupus Ku autoantigen protein p86, TLAA and XRCC5, is a nucleus and chromosome which belongs to theku80 family. XRCC5 is a single stranded DNA-dependent ATP-dependent helicase. XRCC5 has a role in chromosome translocation. X-ray repair cross-complementing protein 6, also known as 5'-deoxyribose-5-phosphate lyase Ku70, ATP-dependent DNA helicase 2 subunit 1, ATP-dependent DNA helicase II 70 kDa subunit, 70 kDa subunit of Ku antigen, ATP-dependent DNA helicase 2 subunit 1, CTC box-binding factor 75 kDa subunit, Lupus Ku autoantigen protein p70, Thyroid-lupus autoantigen and XRCC6, is a nucleus and chromosome which belongs to theku70 family. Heterodimer of a XRCC6 and a XRCC5 subunit associates in a DNA-dependent manner with PRKDC to form the DNA-dependent protein kinase complex DNA-PK, and with the LIG4-XRCC4 complex. The dimer also associates with NAA15, and this complex binds to the osteocalcin promoter and activates osteocalcin expression.

---

## For Research Use Only