

# Recombinant Human A1BG/alpha 1B-Glycoprotein Protein (His Tag)



Catalog Number:PKSH030510

**Note:** Centrifuge before opening to ensure complete recovery of vial contents.

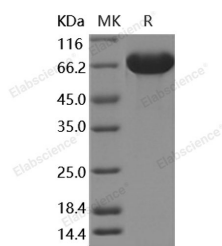
## Description

<b>Synonyms</b>	A1B;ABG;GAB;HYST2477
<b>Species</b>	Human
<b>Expression Host</b>	HEK293 Cells
<b>Sequence</b>	Met 1-Ser495
<b>Accession</b>	NP_570602.2
<b>Calculated Molecular Weight</b>	53.4 kDa
<b>Tag</b>	C-His

## Properties

<b>Purity</b>	> 95 % as determined by reducing SDS-PAGE.
<b>Endotoxin</b>	< 1.0 EU per µg of the protein as determined by the LAL method.
<b>Storage</b>	Generally, lyophilized proteins are stable for up to 12 months when stored at -20 to -80°C. Reconstituted protein solution can be stored at 4-8°C for 2-7 days. Aliquots of reconstituted samples are stable at < -20°C for 3 months.
<b>Shipping</b>	This product is provided as lyophilized powder which is shipped with ice packs.
<b>Formulation</b>	Lyophilized from sterile PBS, pH 7.4 Normally 5 % - 8 % trehalose, mannitol and 0.01% Tween80 are added as protectants before lyophilization. Please refer to the specific buffer information in the printed manual.
<b>Reconstitution</b>	Please refer to the printed manual for detailed information.

## Data



> 95 % as determined by reducing SDS-PAGE.

## Background

Alpha-1B-glycoprotein (A1BG) is an approximately 80 kDa molecule that circulates in the serum. Mature human A1BG consists of five tandem Ig-like domains and shares 44% amino acid sequence identity with mouse and rat A1BG. Alternative splicing generates an isoform that lacks the signal peptide and the first Ig-like domain. A1BG binds with high affinity to the cysteine-rich protein CRISP3. In pancreatic carcinoma, it is elevated in pancreatic juice as well as in the serum relative to normal patients. A1BG is abnormally excreted into the urine during idiopathic nephrotic syndrome (INS). Multiple breakdown fragments of A1BG are also present in INS urine, including one of 14 kDa that is found in steroid-resistant but not steroid-sensitive cases. A1BG is also elevated in the urine of patients with interstitial cystitis/painful bladder syndrome (IC/PBS).

## For Research Use Only

A Reliable Research Partner in Life Science and Medicine

Toll-free: 1-888-852-8623

Web: [www.elabscience.com](http://www.elabscience.com)

Tel: 1-832-243-6086

Email: [techsupport@elabscience.com](mailto:techsupport@elabscience.com)

Fax: 1-832-243-6017