

# Recombinant Human LAP3/Cytosol Aminopeptidase Protein (His Tag)



Catalog Number:PKSH030544

**Note:** Centrifuge before opening to ensure complete recovery of vial contents.

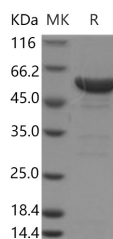
## Description

<b>Synonyms</b>	HEL-S-106;LAP;LAPEP;PEPS
<b>Species</b>	Human
<b>Expression Host</b>	HEK293 Cells
<b>Sequence</b>	Met 1-Ala519
<b>Accession</b>	NP_056991.2
<b>Calculated Molecular Weight</b>	57.6 kDa
<b>Tag</b>	C-His

## Properties

<b>Purity</b>	> 90 % as determined by reducing SDS-PAGE.
<b>Endotoxin</b>	< 1.0 EU per µg of the protein as determined by the LAL method.
<b>Storage</b>	Generally, lyophilized proteins are stable for up to 12 months when stored at -20 to -80°C. Reconstituted protein solution can be stored at 4-8°C for 2-7 days. Aliquots of reconstituted samples are stable at < -20°C for 3 months.
<b>Shipping</b>	This product is provided as lyophilized powder which is shipped with ice packs.
<b>Formulation</b>	Lyophilized from sterile 20 mM Tris, 500 mM NaCl, 20 % glycerol, pH 7.4 Normally 5 % - 8 % trehalose, mannitol and 0.01% Tween80 are added as protectants before lyophilization. Please refer to the specific buffer information in the printed manual
<b>Reconstitution</b>	Please refer to the printed manual for detailed information.

## Data



> 90 % as determined by reducing SDS-PAGE.

## Background

LAP3 (Leucine Aminopeptidase 3) is a Protein Coding gene. Diseases associated with LAP3 include Bacterial Vaginosis and Trichomoniasis. Among its related pathways are Arginine and proline metabolism and Metabolism. Gene Ontology (GO) annotations related to this gene include peptidase activity and aminopeptidase activity. An important paralog of this gene is NPEPL1.

## For Research Use Only

A Reliable Research Partner in Life Science and Medicine

Toll-free: 1-888-852-8623

Web: [www.elabscience.com](http://www.elabscience.com)

Tel: 1-832-243-6086

Email: [techsupport@elabscience.com](mailto:techsupport@elabscience.com)

Fax: 1-832-243-6017