

# Recombinant Human Annexin A8/ANXA8 Protein (His Tag)



Catalog Number:PKSH030551

**Note:** Centrifuge before opening to ensure complete recovery of vial contents.

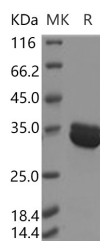
## Description

|                                    |   |
|------------------------------------|---|
| <b>Synonyms</b>                    | Annexin A8;Annexin VIII;Annexin-8;Vascular Anticoagulant-Beta;VAC-Beta;ANXA8;ANX8 |
| <b>Species</b>                     | Human   |
| <b>Expression Host</b>             | E.coli  |
| <b>Sequence</b>                    | Met 1-Pro327  |
| <b>Accession</b>                   | AAH73755.1  |
| <b>Calculated Molecular Weight</b> | 39.1 kDa  |
| <b>Observed molecular weight</b>   | 35 kDa  |
| <b>Tag</b>                         | N-His   |

## Properties

|                       |   |
|-----------------------|---|
| <b>Purity</b>         | > 95 % as determined by reducing SDS-PAGE.  |
| <b>Endotoxin</b>      | Please contact us for more information.   |
| <b>Storage</b>        | Generally, lyophilized proteins are stable for up to 12 months when stored at -20 to -80°C. Reconstituted protein solution can be stored at 4-8°C for 2-7 days. Aliquots of reconstituted samples are stable at < -20°C for 3 months. |
| <b>Shipping</b>       | This product is provided as lyophilized powder which is shipped with ice packs.   |
| <b>Formulation</b>    | Lyophilized from sterile PBS, pH 7.4<br>Normally 5 % - 8 % trehalose, mannitol and 0.01 % Tween80 are added as protectants before lyophilization.<br>Please refer to the specific buffer information in the printed manual.           |
| <b>Reconstitution</b> | Please refer to the printed manual for detailed information.  |

## Data



> 95 % as determined by reducing SDS-PAGE.

## Background

DPEP2 (MBD-2) belongs to the membrane-bound dipeptidase family. There are three members of this family as membrane-bound dipeptidase-1 (MBD-1), membrane-bound dipeptidase-2 (MBD-2) and membrane-bound dipeptidase-3 (MBD-3). MBD-2 is expressed at highest levels in lung, heart, and testis and at some what lower levels in spleen. MBD-2 is membrane-bound through a glycosylphosphatidyl-inositol linkage and probably is a metalloprotease which hydrolyzes leukotriene D4 (LTD4) into leukotriene E4 (LTE4). It is generally recognized that rapid cleavage of LTD4 is important in inactivating the broncho- and vaso-constrictive effects of cysteinyl LTs in asthmatic and inflammatory processes.

## For Research Use Only

A Reliable Research Partner in Life Science and Medicine

Toll-free: 1-888-852-8623

Web: [www.elabscience.com](http://www.elabscience.com)

Tel: 1-832-243-6086

Email: [techsupport@elabscience.com](mailto:techsupport@elabscience.com)

Fax: 1-832-243-6017