

# Recombinant Human DNAJC30 Protein (His Tag)

Catalog Number:PKSH030558



**Note:** Centrifuge before opening to ensure complete recovery of vial contents.

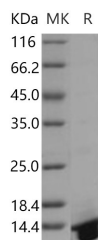
## Description

<b>Synonyms</b>	WBSCR18
<b>Species</b>	Human
<b>Expression Host</b>	E.coli
<b>Sequence</b>	Ser39-Gly124
<b>Accession</b>	Q96LL9
<b>Calculated Molecular Weight</b>	11.4 kDa
<b>Observed molecular weight</b>	14 kDa
<b>Tag</b>	N-His

## Properties

<b>Purity</b>	> 95 % as determined by reducing SDS-PAGE.
<b>Endotoxin</b>	Please contact us for more information.
<b>Storage</b>	Generally, lyophilized proteins are stable for up to 12 months when stored at -20 to -80°C. Reconstituted protein solution can be stored at 4-8°C for 2-7 days. Aliquots of reconstituted samples are stable at < -20°C for 3 months.
<b>Shipping</b>	This product is provided as lyophilized powder which is shipped with ice packs.
<b>Formulation</b>	Lyophilized from sterile PBS, pH7.4 Normally 5 % - 8 % trehalose, mannitol and 0.01 % Tween80 are added as protectants before lyophilization. Please refer to the specific buffer information in the printed manual.
<b>Reconstitution</b>	Please refer to the printed manual for detailed information.

## Data



> 95 % as determined by reducing SDS-PAGE.

## Background

NAJC30 is a member of the DNAJ molecular chaperone homology domain-containing protein family. DNAJC30 gene is deleted in williams syndrome, a multisystem developmental disorder caused by the deletion of contiguous genes at 7q11.23. DNAJC30 is expressed in brain, heart, kidney, liver, lung, spleen, stomach and testis. It contains 1 J domain. DNAJC30 is located in the Williams-Beuren syndrome (WBS) critical region. WBS results from a hemizygous deletion of several genes on chromosome 7q11.23, thought to arise as a consequence of unequal crossing over between highly homologous low-copy repeat sequences flanking the deleted region.

## For Research Use Only

A Reliable Research Partner in Life Science and Medicine

Toll-free: 1-888-852-8623

Web: [www.elabscience.com](http://www.elabscience.com)

Tel: 1-832-243-6086

Email: [techsupport@elabscience.com](mailto:techsupport@elabscience.com)

Fax: 1-832-243-6017