

Recombinant Human STC2/Stanniocalcin 2 Protein (Fc Tag)



Catalog Number:PKSH030584

Note: Centrifuge before opening to ensure complete recovery of vial contents.

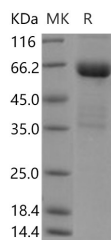
Description

Synonyms	STC-2;STCRP
Species	Human
Expression Host	HEK293 Cells
Sequence	Met 1-Arg302
Accession	O76061
Calculated Molecular Weight	57.7 kDa
Observed molecular weight	63 kDa
Tag	C-hFc

Properties

Purity	> 85 % as determined by reducing SDS-PAGE.
Endotoxin	< 1.0 EU per µg of the protein as determined by the LAL method.
Storage	Generally, lyophilized proteins are stable for up to 12 months when stored at -20 to -80°C. Reconstituted protein solution can be stored at 4-8°C for 2-7 days. Aliquots of reconstituted samples are stable at < -20°C for 3 months.
Shipping	This product is provided as lyophilized powder which is shipped with ice packs.
Formulation	Lyophilized from sterile PBS, pH 7.4 Normally 5 % - 8 % trehalose, mannitol and 0.01 % Tween80 are added as protectants before lyophilization. Please refer to the specific buffer information in the printed manual.
Reconstitution	Please refer to the printed manual for detailed information.

Data



> 85 % as determined by reducing SDS-PAGE.

Background

STC2 is a secreted; homodimeric glycoprotein which expressed in a wide variety of tissues. STC2 has an anti-hypocalcemic action on calcium and phosphate homeostasis. It may have autocrine or paracrine functions. Its C-terminus contains a cluster of histidine residues which may interact with metal ions. STC2 has 10 of its 15 cysteine residues conserved among stanniocalcin family members and is phosphorylated by casein kinase 2 exclusively on its serine residues. It may play a role in the regulation of renal and intestinal calcium and phosphate transport; cell metabolism; or cellular calcium/phosphate homeostasis.

For Research Use Only

A Reliable Research Partner in Life Science and Medicine

Toll-free: 1-888-852-8623

Web: www.elabscience.com

Tel: 1-832-243-6086

Email: techsupport@elabscience.com

Fax: 1-832-243-6017