

Recombinant Human DCBLD2/ESDN Protein (aa 1-482, His Tag)

Catalog No. PKSH030592

Note: Centrifuge before opening to ensure complete recovery of vial contents.

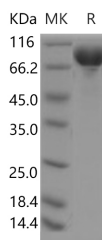
Description

Synonyms	Discoidin;CUB and LCCL domain-containing protein 2;DCBLD2;CUB;LCCL and coagulation factor V/VIII-homology domains protein 1;Endothelial and smooth muscle cell-derived neuropilin-like protein;DCBLD2;CLCP1;ESDN
Species	Human
Expression Host	HEK293 Cells
Sequence	Met 1-Ala482
Accession	NP_563615.3
Calculated Molecular Weight	52.6 kDa
Observed molecular weight	69-89 kDa
Tag	C-His
Bioactivity	Not validated for activity

Properties

Purity	> 95 % as determined by reducing SDS-PAGE.
Endotoxin	< 1.0 EU per µg of the protein as determined by the LAL method.
Storage	Generally, lyophilized proteins are stable for up to 12 months when stored at -20 to -80°C. Reconstituted protein solution can be stored at 4-8°C for 2-7 days. Aliquots of reconstituted samples are stable at < -20°C for 3 months.
Shipping	This product is provided as lyophilized powder which is shipped with ice packs.
Formulation	Lyophilized from sterile PBS, pH 7.4 Normally 5 % - 8 % trehalose, mannitol and 0.01% Tween80 are added as protectants before lyophilization. Please refer to the specific buffer information in the printed manual.
Reconstitution	Please refer to the printed manual for detailed information.

Data



> 95 % as determined by reducing SDS-PAGE.

Background

For Research Use Only

DCBLD2, also known as ESDN and CLCP1, localizes in various compartments. DCBLD2 is up-regulated in lung cancers and is regulated by transcription factor AP-2 alpha (TFAP2A), a component of activator protein-2 (AP-2) that is known to regulate IL-8 production in human lung fibroblasts and epithelial cells. DCBLD2 could be related to FEV(1)-related phenotypes in asthmatics. DCBLD2 gene is expressed at very high level. DCBLD2 is proposed to participate in processes such as intracellular receptor mediated signaling pathway, negative regulation of cell growth and so on.