

Recombinant Human SELM/Selenoprotein M Protein (His Tag)



Catalog Number:PKSH030612

Note: Centrifuge before opening to ensure complete recovery of vial contents.

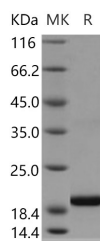
Description

Synonyms	SEPM
Species	Human
Expression Host	E.coli
Sequence	Ala 24-Leu 145
Accession	Q8WWX9
Calculated Molecular Weight	15.4 kDa
Observed molecular weight	19 kDa
Tag	C-His

Properties

Purity	> 97 % as determined by reducing SDS-PAGE.
Endotoxin	Please contact us for more information.
Storage	Generally, lyophilized proteins are stable for up to 12 months when stored at -20 to -80°C. Reconstituted protein solution can be stored at 4-8°C for 2-7 days. Aliquots of reconstituted samples are stable at < -20°C for 3 months.
Shipping	This product is provided as lyophilized powder which is shipped with ice packs.
Formulation	Lyophilized from sterile 50mM Tris, 50mM NaCl, 50mM Arg, 0.3% Tween 20, 5% glycerol, pH 8.5 Normally 5 % - 8 % trehalose, mannitol and 0.01 % Tween80 are added as protectants before lyophilization. Please refer to the specific buffer information in
Reconstitution	Please refer to the printed manual for detailed information.

Data



> 97 % as determined by reducing SDS-PAGE.

Background

Selenoprotein M is a selenoprotein, which contains a selenocysteine (Sec) residue at its active site. The selenocysteine M is encoded by the UGA codon that normally signals translation termination. The 3' UTR of selenoprotein genes have a common stem-loop structure, the sec insertion sequence (SECIS), that is necessary for the recognition of UGA as a Sec codon rather than as a stop signal. This gene is expressed in a variety of tissues, and the protein is localized to the perinuclear structures. Selenoprotein M May function as a thiol-disulfide oxidoreductase that participates in disulfide bond formation. This protein is widely expressed and is highly expressed in brain. It is found in Cytoplasm, perinuclear region, Endoplasmic reticulum, Golgi apparatus. Localized to perinuclear structures corresponding to Golgi and

For Research Use Only

A Reliable Research Partner in Life Science and Medicine

Toll-free: 1-888-852-8623

Web: www.elabscience.com

Tel: 1-832-243-6086

Email: techsupport@elabscience.com

Fax: 1-832-243-6017

Recombinant Human SELM/Selenoprotein M Protein (His Tag)



Catalog Number:PKSH030612

endoplasmic reticulum. Experiments results have suggested that selenoprotein M may have an important role in protecting against oxidative damage in the brain and may potentially function in calcium regulation.

For Research Use Only

A Reliable Research Partner in Life Science and Medicine

Toll-free: 1-888-852-8623

Tel: 1-832-243-6086

Fax: 1-832-243-6017

Web: www.elabscience.com

Email: techsupport@elabscience.com