

Recombinant Human LRG1 Protein (His Tag)

Catalog Number:PKSH030641



Note: Centrifuge before opening to ensure complete recovery of vial contents.

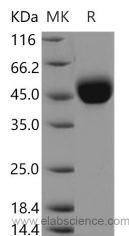
Description

Synonyms	Leucine-rich alpha-2-glycoprotein;HMFT1766; LRG; LRG1
Species	Human
Expression Host	HEK293 Cells
Sequence	Met 1-Gln347
Accession	AAH34389.1
Calculated Molecular Weight	35.8 kDa
Observed molecular weight	44-48 kDa
Tag	C-His

Properties

Purity	> 95 % as determined by reducing SDS-PAGE.
Endotoxin	< 1.0 EU per µg as determined by the LAL method.
Storage	Lyophilized proteins are stable for up to 12 months when stored at -20 to -80°C. Reconstituted protein solution can be stored at 4-8°C for 2-7 days. Aliquots of reconstituted samples are stable at < -20°C for 3 months.
Shipping	This product is provided as lyophilized powder which is shipped with ice packs.
Formulation	Lyophilized from sterile PBS, pH 7.4
Reconstitution	Please refer to the printed manual for detailed information.

Data



Background

LRG1 belongs to the leucine-rich repeat (LRR) family. Members of this family are involved in protein-protein interaction, signal transduction, and cell adhesion and development. LRG1 is expressed during granulocyte differentiation. It contains 4 LIM zinc-binding domains and 1 Rho-GAP domain.

For Research Use Only

A Reliable Research Partner in Life Science and Medicine

Toll-free: 1-888-852-8623

Web: www.elabscience.com

Tel: 1-832-243-6086

Email: techsupport@elabscience.com

Fax: 1-832-243-6017